



LIGHTS THAT ILLUMINATE GROWTH.

INDUSTRIAL LIGHTING SOLUTIONS
THAT CREATE AN ENVIRONMENT WHERE
GROWTH THRIVES.



“ WE ILLUMINATE NATIONS ”

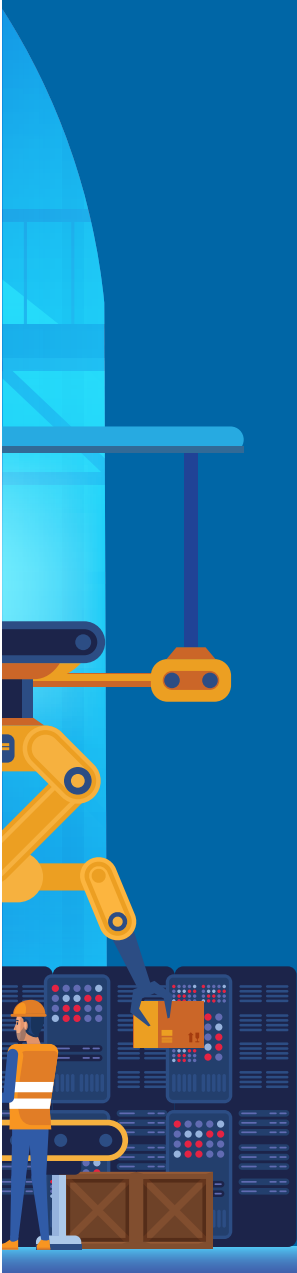
The last few decades have witnessed a rapid acceleration of globalisation, mainly due to a growth in international trade and an increase in the use of smart technology. This has led to growing urbanisation and digitalisation, particularly in developing countries.

To fulfil the demands arising out of accelerated globalisation and its effects, Bajaj Electricals Limited has expanded its horizon, through a host of smart indoor and connected outdoor solutions. These solutions are catalysts driving change within urban communities. Furthermore, Bajaj Electricals aims to provide technically advanced IoT-enabled smart solutions to consumers, to help create sustainable living spaces for them.

We offer a range of lighting solutions such as Smart Poles, Sports Lighting, Architectural Lighting and Solar Lighting. Besides this, we also provide lighting solutions for commercial premises, industrial spaces (i.e. Healthcare, Automotive, Steel and Power Industry), IBMS solutions and holistic solutions to create energy-efficient buildings and smart cities.


We strive to provide a one-stop shop solution to our customers, with the help of a complete on-ground support system as well as digital platforms like cloud-based connectivity and wireless solutions. This will enhance productivity and make it easier to create sustainable and smart infrastructure.

The diverse range of solutions we are aiming to provide, demonstrates our ambition to reach out to, enrich and illuminate millions of lives, cities and nations across the world.



“ CUSTOMER PERCEPTION ”





WHAT IS NOT VISIBLE?



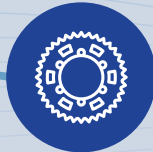
Long Term Reliability



Quality



Service Force



Spare Cost



Longevity



Downtime Loss



Manpower Cost



Maintenance Cost



Reputation Loss

“Q1”

In today's world, when it comes to purchasing lighting solutions for upgrade or greenfield projects, consumers consider price as the most important factor. Along with this, quick delivery and a long warranty period satisfy the consumer. However, essential aspects such as quality, longevity, reliability, cost of spares, maintenance cost and the reputation of the brand are often ignored, leading to discomfort in the future.

At Bajaj Electricals, we understand the need of the hour and provide innovative and smart lighting solutions to cater to customer requirements in order to change their perspective towards long lasting quality, reliability and the cost of ownership.

Quality One (Q1) has always been our motto and 'Inspiring Trust' is our ideology. Keeping this in mind, we deliver only the best quality products and solutions.

Install



Maintain

Life Cycle Service

“

OUR PERSPECTIVE ON CATEGORISING EVERY NEED OF OUR CUSTOMER

”



Create



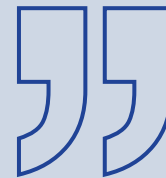
FIT



Observe



ADOPTING THE Q1 MOTTO HELPS CONVERT CONSUMER PAINS TO CONSUMER GAINS



DEFINED JOB



Lowest
Pricing



Faster
Delivery



Warranty

CUSTOMER PAINS



Downtime
Loss



Maintenance
Cost



Manpower
Cost



Spare
Cost



Reputation
Loss

CUSTOMER GAINS



Quality



Long Term



Reliability



Service Force



Longevity



BAJAJ ILLUMINATION - CONCEPT TO CARE



**R&D
MANUFACTURING
FACILITIES**

**COMPLETE
PRODUCT BASKET**



**SMART & CONNECTED
SOLUTIONS**

**SUPPLY - INSTALLATION
- TESTING &
COMMISSIONING (SITC)**



**LIGHTING DESIGN
& ENGINEERING
SERVICE**



**COMPLETE LIFE CYCLE
MANAGEMENT -
SERVICE &
MAINTENANCE**





OUR STATE-OF-THE-ART MANUFACTURING FACILITIES



Our certifications and futuristic manufacturing facilities are a testament to our commitment to developing products of the highest standard. Each product is carefully crafted to set benchmarks in the industry and deliver a high level of performance.





LEED CERTIFIED R&D CENTRE



A B SQUARE BAJAJ ELECTRICALS LIMITED

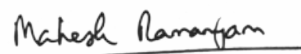
Navi Mumbai, India

HAS FULFILLED THE REQUIREMENTS OF THE LEED GREEN BUILDING RATING SYSTEM CERTIFICATION ESTABLISHED BY THE U.S. GREEN BUILDING COUNCIL AND VERIFIED BY GREEN BUSINESS CERTIFICATION INC.

LEED 2009
NEW CONSTRUCTION AND MAJOR RENOVATIONS

PLATINUM

January 2018



MAHESH RAMANUJAM, PRESIDENT & CEO, U.S. GREEN BUILDING COUNCIL,
PRESIDENT & CEO, GREEN BUSINESS CERTIFICATION INC.



NABL CERTIFIED LABORATORY



**National Accreditation Board for
Testing and Calibration Laboratories**
(A Constituent Board of Quality Council of India)



CERTIFICATE OF ACCREDITATION

AB SQUARE, BAJAJ ELECTRICALS LTD.

has been assessed and accredited in accordance with the standard

ISO/IEC 17025:2005

"General Requirements for the Competence of Testing & Calibration Laboratories"

for its facilities at

Plot No. 27/PT-2, TTC Industrial Area, Millennium Business Park,
Mahape, Navi Mumbai, Maharashtra

in the field of

TESTING

Certificate Number TC-7704

Issue Date 16/08/2018

Valid Until 15/08/2020

This certificate remains valid for the Scope of Accreditation as specified in the annexure subject to continued satisfactory compliance to the above standard & the relevant requirements of NABL.

(To see the scope of accreditation of this laboratory, you may also visit NABL website www.nabl-india.org)

Signed for and on behalf of NABL



89076970100030001823

Anil Relia
Chief Executive Officer



NABL CERTIFIED LABORATORY



National Accreditation Board for Testing and Calibration Laboratories
(A Constituent Board of Quality Council of India)



SCOPE OF ACCREDITATION

Laboratory AB Square, Bajaj Electricals Ltd., Plot No. 27/PT-2, TTC Industrial Area, Millennium Business Park, Mahape, Navi Mumbai, Maharashtra

Accreditation Standard ISO/IEC 17025: 2005

Certificate Number TC-7704 **Page 1 of 1**

Validity 16.08.2018 to 15.08.2020 **Last Amended on --**

Sl.	Product / Material of Test	Specific Test Performed	Test Method Specification against which tests are performed	Range of Testing / Limits of Detection
-----	----------------------------	-------------------------	-------------------------------------------------------------	----------------------------------------

PHOTOMETRY TESTING

L	Luminaries			
1.	Light Source and Luminaire	Luminous Flux Intensity Distribution CCT (K) and CRI	IS 16106 (clause no. 11, 12, 14) IESNA LM79 -08 (Clause no. 9,10, 12)	5 lm to 2 x10 ³ lm 1 cd to 5 x 10 ⁴ cd 2000 K to 10000 K (Upto100) 0.0001 to 1 360 nm to 800 nm
		Chromaticity Co-ordinates (x, y or u, v)		
		Spectral Power Distribution		

Mandeep Kumar
Mandeep Kumar
Convener

Anuja Anand
Anuja Anand
Program Manager



ALWAYS AT YOUR SERVICE



Our highly trained service engineers ensure you have a hassle-free experience. Our spare parts are also available at over 20 Bajaj Electricals warehouses across India, while the 24x7 service registration facility through the mobile app and dealer extranet gives more power in your hands.

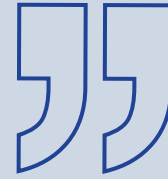
 **022 - 4128 1111**

10:00 AM to 7:00 PM (MON - SAT)

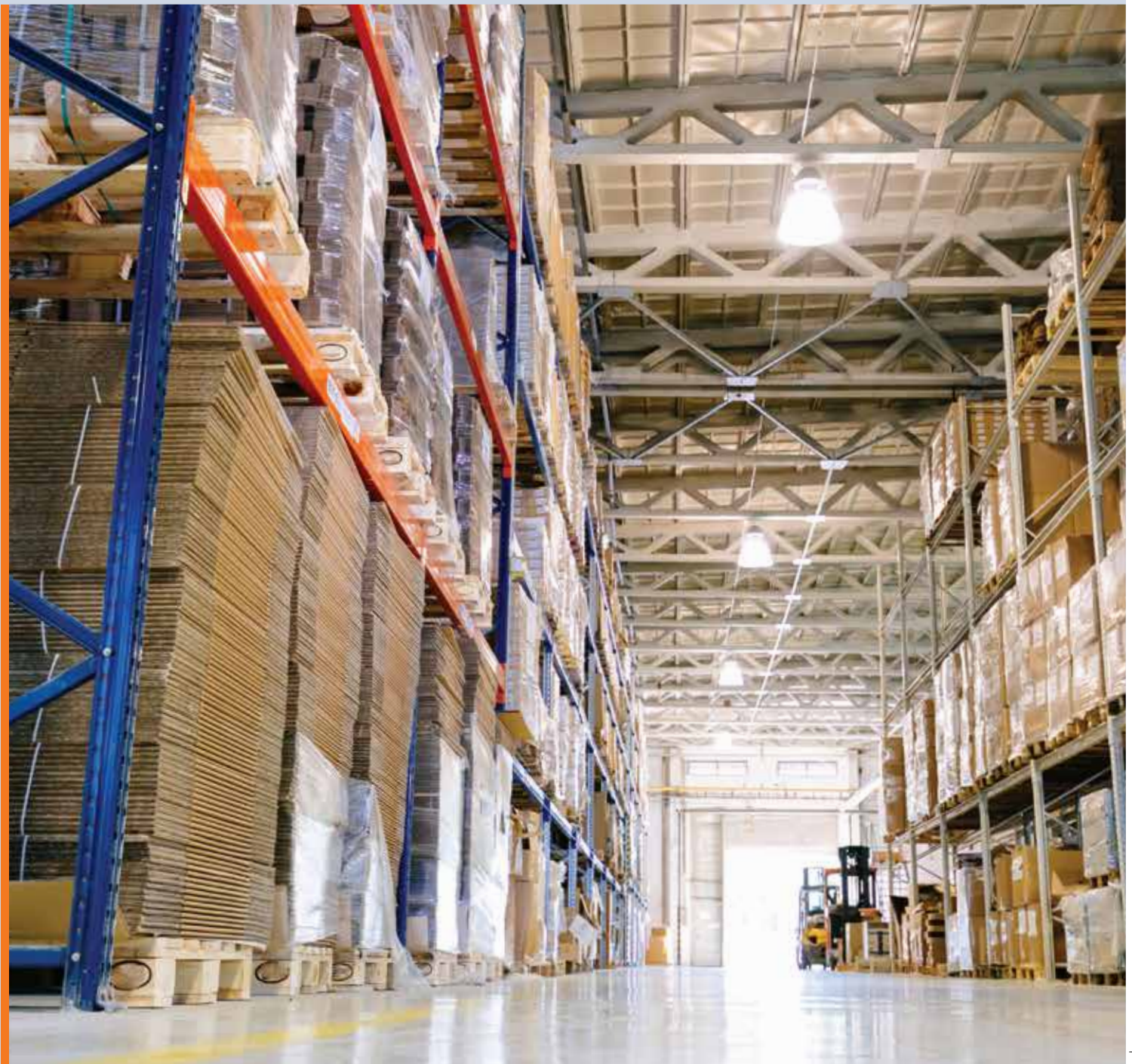




STACKED FOR GREATER EFFICIENCY



The systematic storage facility at our warehouse enables us to use space optimally and ensure that the stock is easily accessible when needed. It creates an efficient working environment and eliminates any bottlenecks in the flow of the stock.





BAJAJ'S INDUSTRIAL LIGHTING SOLUTIONS

TAILORED FOR WIDESPREAD APPLICATIONS

▶ INDUSTRIAL LIGHTING



LOGISTICS & WAREHOUSING



AUTOMOTIVE



PHARMACEUTICAL



FOOD & BEVERAGE



STEEL



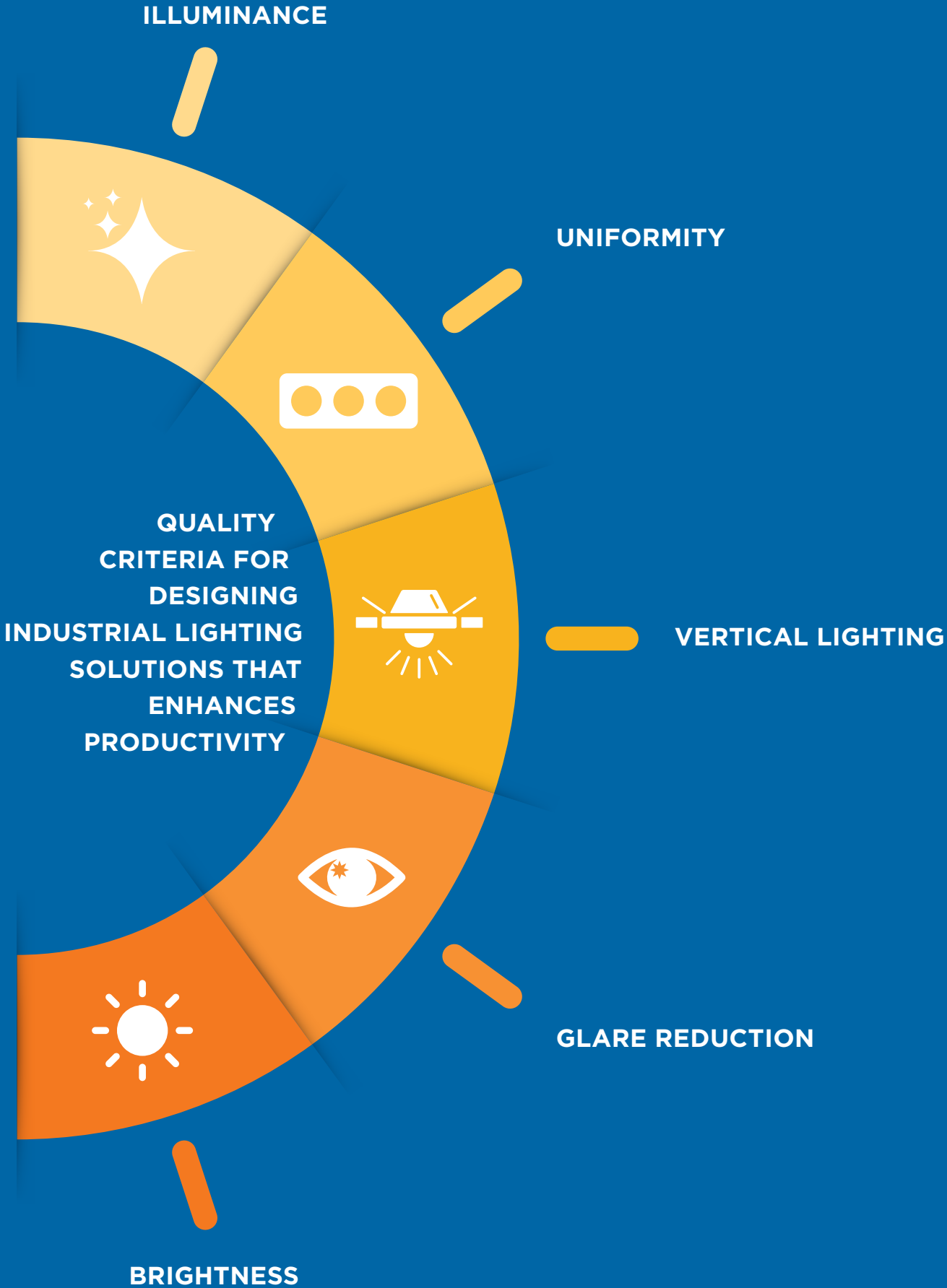
POWER



A vertical photograph on the left side of the page shows an industrial machine, possibly a lathe or mill, in a factory setting. The machine is white and grey, with a control panel. In the background, there are windows with horizontal blinds and overhead fluorescent lights. The floor is light-colored.

**“ WE TRANSMUTE
YOUR WORKSPACES
WITH LIGHTING
AND BEYOND ”**

Industrial spaces demand a high level of accuracy and performance. Hence, the right lighting plays a vital role especially in terms of vision. It creates an ideal and safe workspace, influences the mood and improves the level of concentration, which results in better productivity.



The background of the entire page is a photograph showing several people's hands stacked in a circle. The hands are of various skin tones, suggesting a diverse group of people. The background is slightly blurred, showing what appears to be a workshop or office environment with papers, a yellow balloon, and some tools.

**PROTECTING
USERS
WITH SAFE
PROCESSES**

INCREASED ENERGY EFFICIENCY FOR FLEXIBILITY TO BUSINESS

Control, Maintain and Grow



SMART SOLUTIONS FOR SMART SAVINGS

Our easily adaptable and compatible smart solutions give added control for optimum use of lighting. It gives complete control to the controller enabling easy and smooth transfer of lighting levels at multiple locations. Saving power and also providing perfect illumination.

ZERO MAINTENANCE

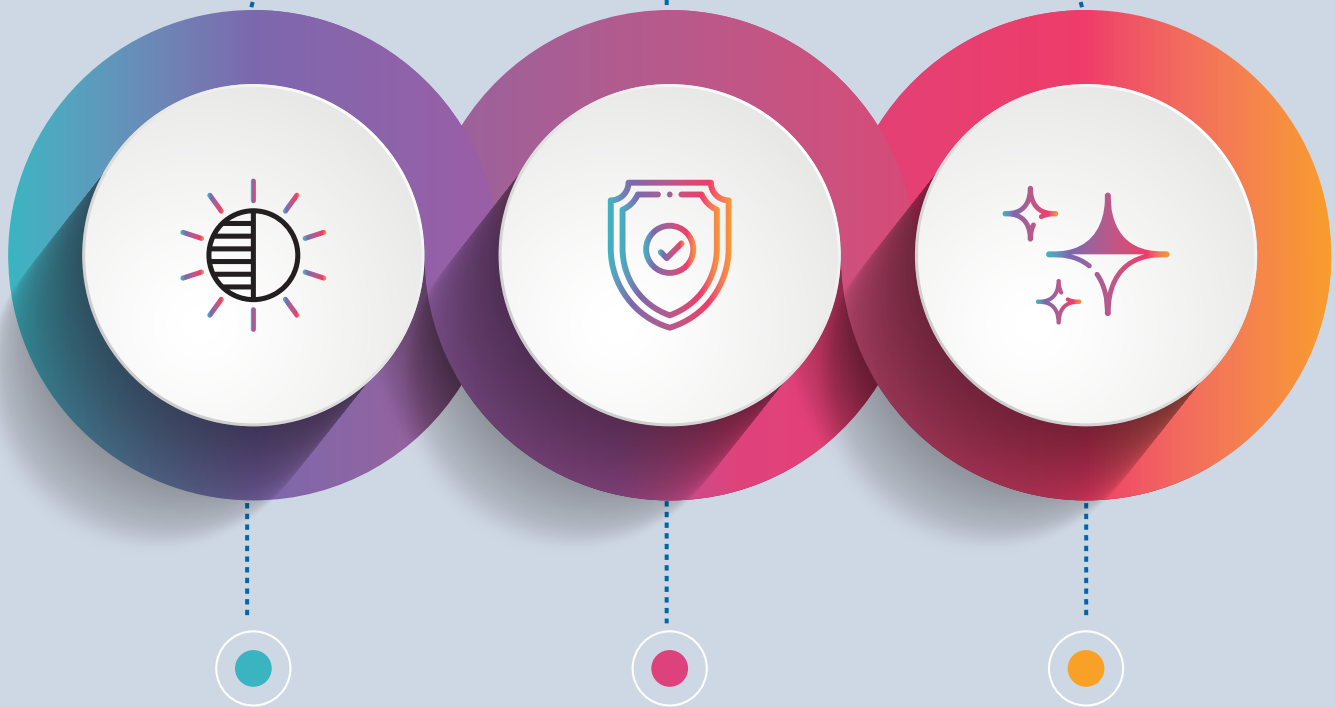
Smart solutions with remote fault detection and simple interface facilities ensure zero down time and loss of productive time.

ENERGY SAVINGS AND OPTIMISATION

Implementing lighting controls enhances the possibility of improving dynamic efficiency. Lighting can also be integrated with basis occupancy, daylight sensors and time logic.

PERFECT ILLUMINATION, RIGHT AMBIENCE

For Enhanced Productivity
Design, Install and Optimise



BENEFITS OF BALANCED BRIGHTNESS

Proper visual comfort, wall reflection, luminance and colour contrasts reduces glare on electronic gadgets.

HEALTHIER & SAFER ENVIRONMENT

Uniform light, no dark patches and good colour rendering boosts productivity leaving no room for error.

ADVANTAGES OF GLARE REDUCTION

Anti-glare lighting ensures visual comfort for a healthy workspace.

LIGHTING SCOPE IN INDUSTRY SEGMENT

INDUSTRY SIZE

Small to Large
Small (<200 m²) or
Huge Industrial
Complexes
(>100,000 m²)

ENVIRONMENT CONDITION

Dry/Wet/Clean or
Dusty Environment

TEMPERATURE CONDITION

Warm/Hot
(Metal/Steel Industry or
Cold Storage Industry)

HEIGHT

Low to High Heights
Low (2.8m) or High
Mounting Heights
(+25m)

AIR CONTENT CONDITION

Normal to Chemically
Aggressive Atmosphere

HYGIENE CONDITION

Normal to Hygienic
Conditions like Non-
Perishable Mfg to Food
Mfg/Beverage Mfg





For Industrial Lighting, we strictly adhere to international and local applicable standards. EN 12464, IS 6665 and IS 3646 are some of the applicable standards for industrial lighting applications.



Lighting Quality Criteria:

- Adequate Lighting Level (Illuminance)
- Uniformity
- Vertical Lighting
- Glare Reduction
- Balanced Brightness

QUALITY CRITERIA



EN 12464: Recommendations for Industrial Lighting
Industrial Activities and Crafts - Metal Working and Processing

Ref. No.	Type of area, task or activity	£m	UGR _L	U _o	R _s	Specific requirements
5.18.1	Open die forging	200	25	0.60	80	
5.18.2	Drop forging	300	25	0.60	80	
5.18.3	Welding	300	25	0.60	80	
5.18.4	Rough and average machining: tolerances ≥0.1 mm	300	22	0.60	80	
5.18.5	Precision machining: grinding: tolerances <0.1 mm	500	19	0.70	80	
5.18.6	Scribing: inspection	750	19	0.70	80	
5.18.7	Wire and pipe drawing shops: cold forming	300	25	0.60	80	
5.18.8	Plate machining: thickness ≥5 mm	200	25	0.60	80	
5.18.9	Sheet metalwork: thickness <5 mm	300	22	0.60	80	
5.18.10	Tool making: cutting equipment manufacture	750	10	0.70	80	
5.18.11	Assembly:					
	- Rough	200	25	0.60	80	
	- Medium	300	25	0.60	80	
	- Fine	500	22	0.60	80	
	- Precision	750	19	0.70	80	

Note: This is a sample table. Similarly, there are other tables for different industries as per the recommended standards.

MAIN AREAS

- Rack Storage
- Receipt and Dispatch Area

▶ RACK STORAGE



Most businesses operate 24 hours a day. Hence, well-designed and energy-efficient lighting plays an important role in ensuring uniform illumination so that operations take place safely and smoothly.

Rack storage areas are large open spaces with high ceilings. Goods are stacked vertically on the racks which are adjacent to one another with typical aisle distance of 2.5 metres. That is why special care is taken to ensure vertical illumination depending on the height and width of the gangways.

Recommended Standards

- Lux Levels: Horizontal - 200lux; Vertical - >100lux
- Mounting Height: 7-8m
- Aisle Width: 2.5m



Right optics to maximise lighting efficiency



Good vertical illumination for uniform light distribution



Low glare for visual comfort

► OPEN RECEIPT & DISPATCH

Receipt and dispatch areas are large open spaces with high ceilings. Hence, these areas require long lasting solutions that offer adequate illumination with good uniformity and low glare performance.

Recommended Standards

- Lux Levels: Horizontal - 200-500lux
- Mounting Height: 7-8m



Long life & maintenance free



Adequate illumination



Good vertical illumination for uniform light distribution



Low glare for visual comfort



FIXTURE LEVEL

Simple to implement. Maximises savings but can get complicated unless you set it and forget it.



GROUPING

Can group by zones or groups. Good example is grouping aisle fixtures together.



SCHEDULING

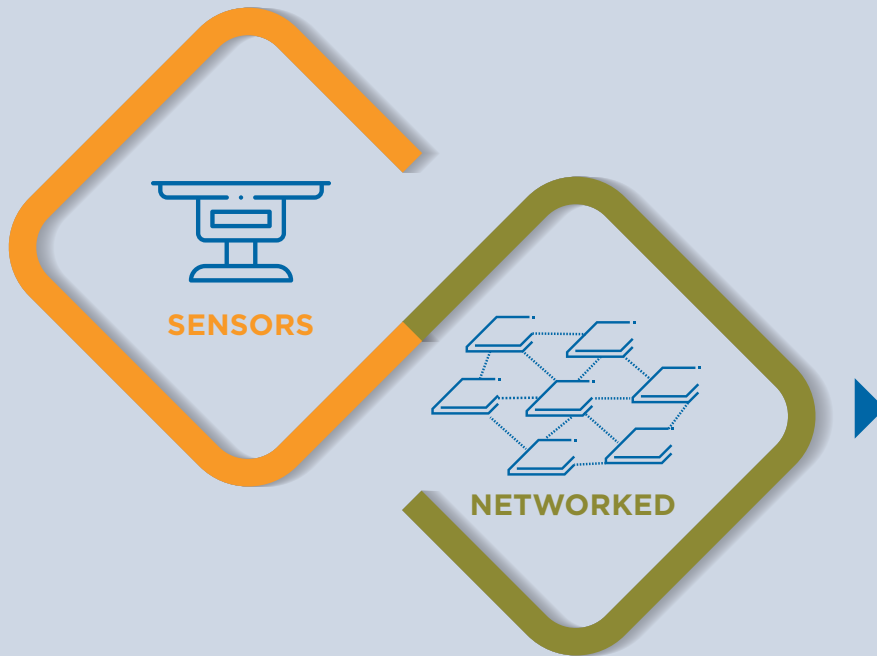
Custom schedules really enhance savings - time, schedules, dimming schedules, etc.



TASK TUNING

Ensures that the optimal amount of light is available for the task at hand.





INTEGRATED

Multiple parts make your cohesive solution.

FLEXIBLE

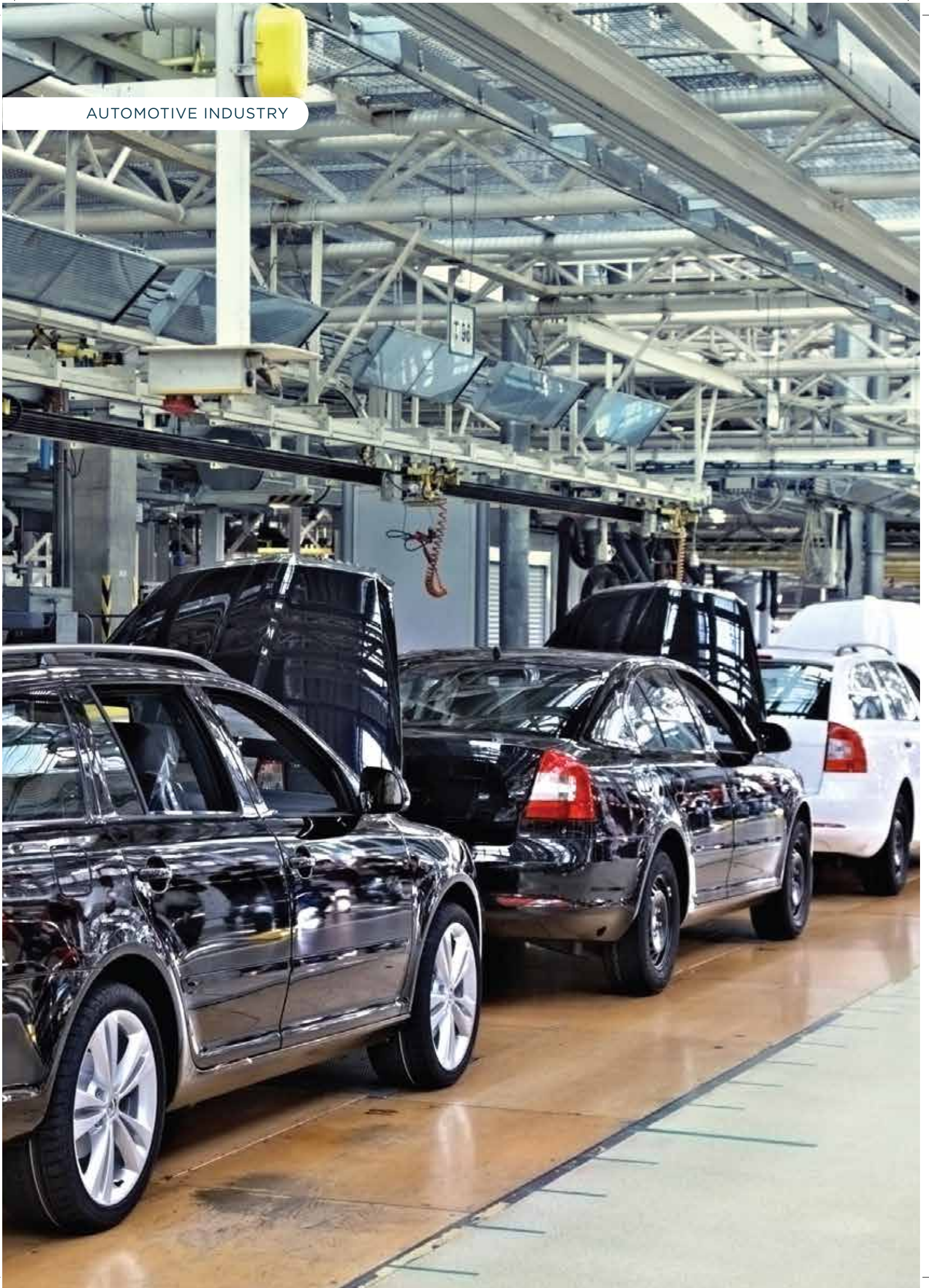
Easily implement your strategies as needed.

SIMPLE

Configure your space effortlessly.



AUTOMOTIVE INDUSTRY



The final product from the automotive industry goes through various phases. Each phase is carried out in a separate space and has specific lighting principles and guidelines.



Sheet Metal Stamping – Press Shop



Body in White Assembly



Paint Shop



Engine Assembly



Final Assembly



Vehicle Testing and Delivery

► PRESS SHOP



Press shops house large and heavy machinery for the stamping process. These areas require appropriate luminaires that are vibration proof and provide deep light penetration to light up the workspace without shadows. Thus, the luminaires installed improve the safety and efficiency of the workers.

Our Specialised Offerings include:

- 200-300lux in between the machines



Our lighting design specialist plans and executes an efficient lighting design that doesn't cast any shadows



Correct lens & beam angles for deep light penetration



Improves safety of workers by correct illumination

► BODY SHOP

The body shop is a large space where pressed components are welded together. Due to the dark appearance of the material and dirt in the environment, this space requires relatively powerful and glare-free luminaires for the production, sub-assembly and inspection process. Luminaires should be closed or screened off by opal or prismatic covers.

Recommended Standards

- General Lighting - 500lux
- Inspection - 1500lux



Good vertical illumination for uniform light distribution



Localised lighting preferred



Improved safety of workers



▶ PAINT SHOP



The paint shop is where vehicles of various colours are produced. This complex process is partly automated and requires high surface lighting with good uniformity for colour rendering.

Recommended Standards

- For Working Zones: 500lux
- Inspection: >1000lux



Low glares
for visual
comfort



For maximum
illumination
on floor



Good CRI for
correct colour
rendering

▶ ASSEMBLY LINE

The assembly line is where all the components are assembled and tested together. This task requires glare-free and high lighting levels for light to penetrate inside the car for inspection.

Recommended Standards

- For Corridors: 200lux
- Machine Work: 500lux
- Inspection: 750lux



Complete vertical illumination is important for visual comfort



Deep light penetration with linear lighting solutions



Good vertical illumination for uniform light distribution



▶ VEHICLE TESTING AND DELIVERY



The car testing, inspection and delivery section is like a large maintenance and repair garage. This area requires uniform lighting, waterproof luminaires and additional task lighting to facilitate car inspection.

Recommended Standards

- General Area: 500lux
- Specific Inspection: 750-1500lux



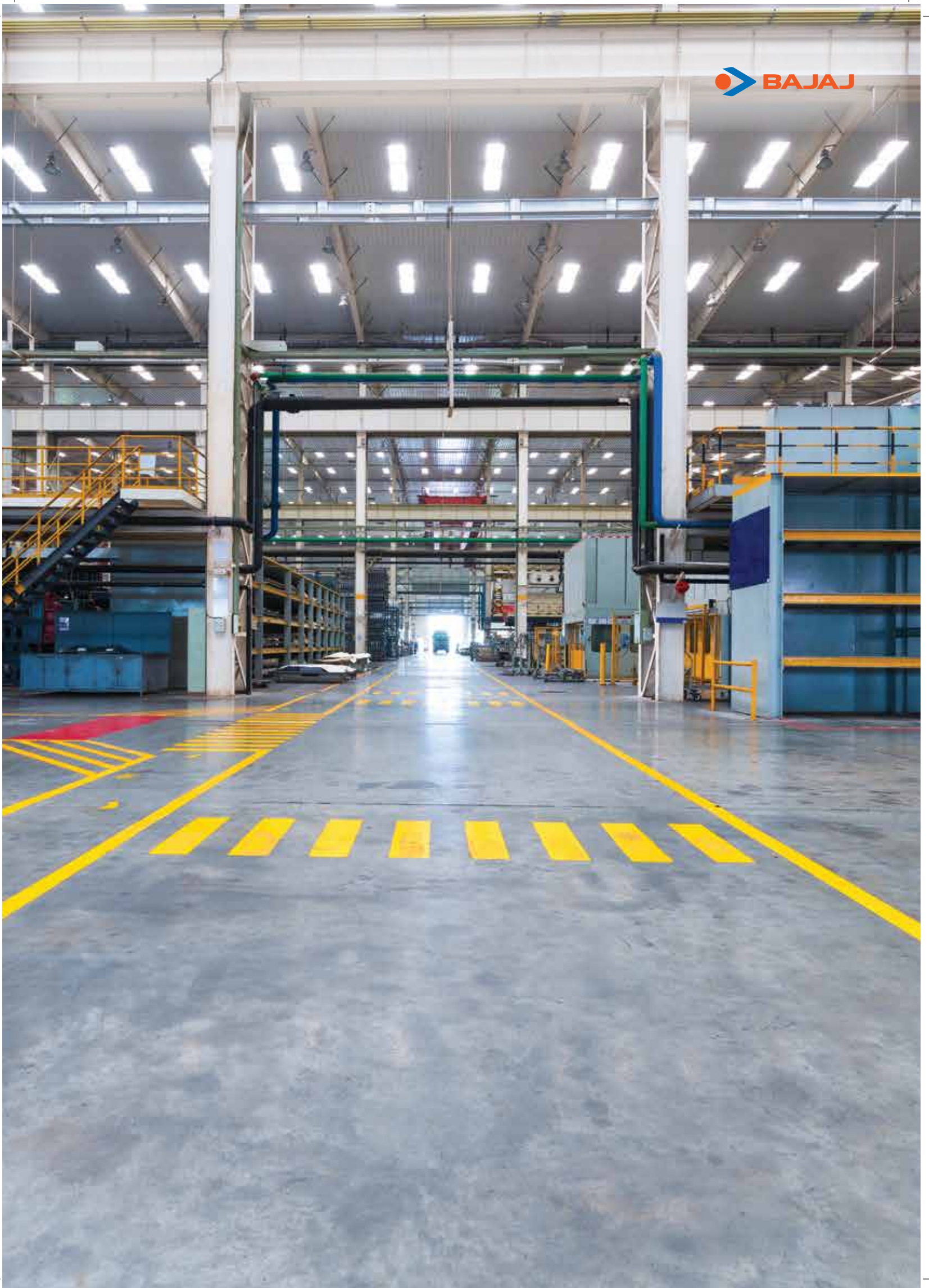
General & local lighting



Good IP rating ensuring waterproof luminaire



Good uniformity





Pharmaceutical Industries house clean rooms, storage areas, laboratories and manufacturing areas. These hygienic facilities require special IP-65, easy to clean, dust-free luminaires that meet all lighting requirements and norms.



Clean Rooms



Storage Areas



Laboratories



Manufacturing Areas

▶ CLEAN ROOMS



Clean rooms are specially conditioned industrial spaces with strict cleanliness standards. These areas require easy to maintain lighting systems that do not interfere with the production process or interrupt the flow of clean air.

► MANUFACTURING, STORAGE AND LAB AREA

Production and lab areas require low maintenance fixtures to control the glare and to minimise disruptions during the process.

Recommended Standards

- For Raw Material Storage: 200lux
- For Labs and Manufacturing: 300lux



Low
maintenance
fixtures



Controlled
glare



Daylight linking
controls



FOOD AND BEVERAGE INDUSTRY



Modern food industry has stringent standards and requires proper lighting to ensure a clean and safe workspace. Hence, clean room fixtures with an IP-65 rating are advisable for these facilities.

Typical areas in a food processing facility:

- NSF classified areas: food zone, non-food zone and splash zone
- Warehousing, staging and distribution areas including cold storage and non-conditioned storage areas
- Hazardous areas
- General indoor and outdoor areas



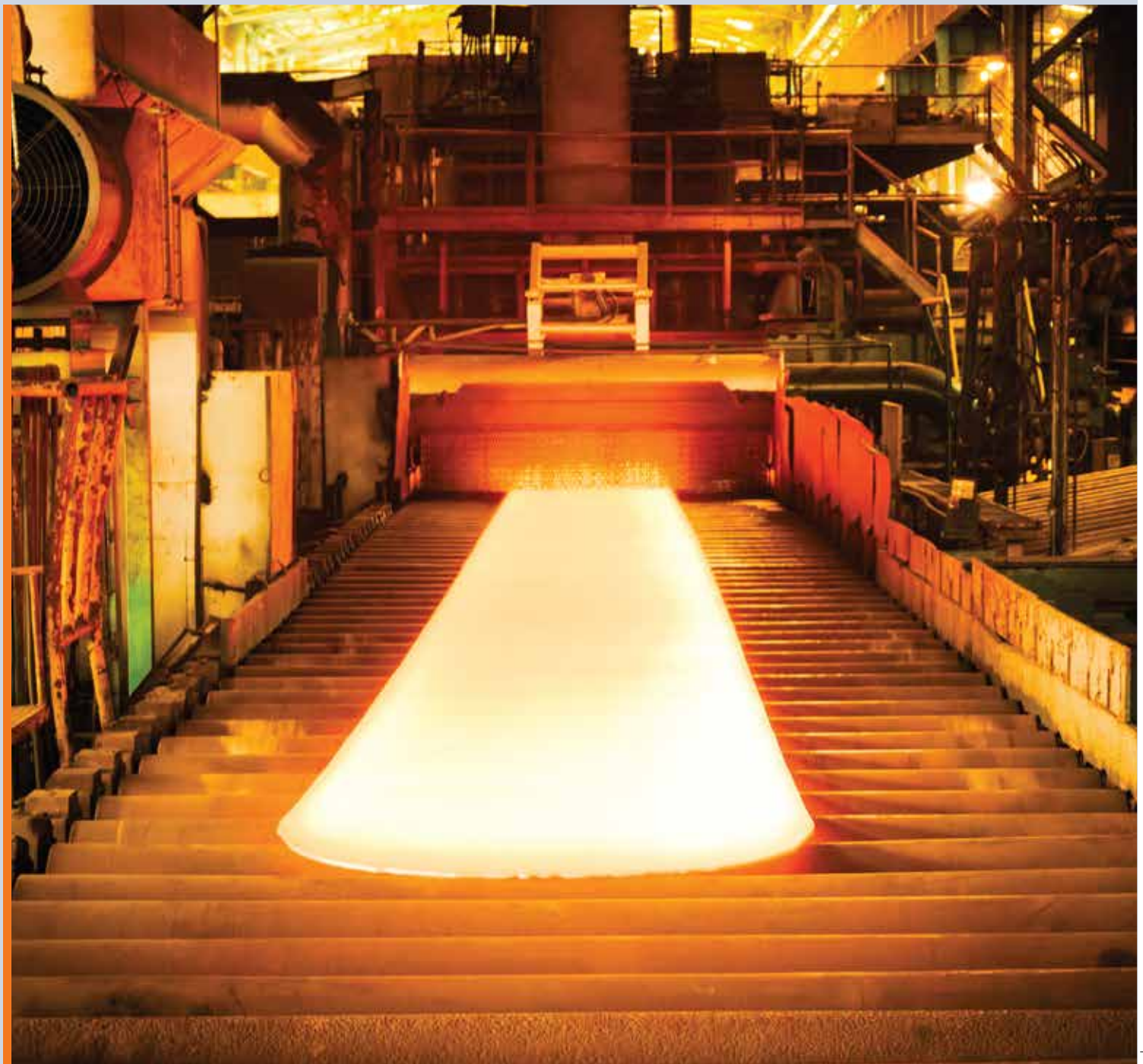
STEEL INDUSTRY

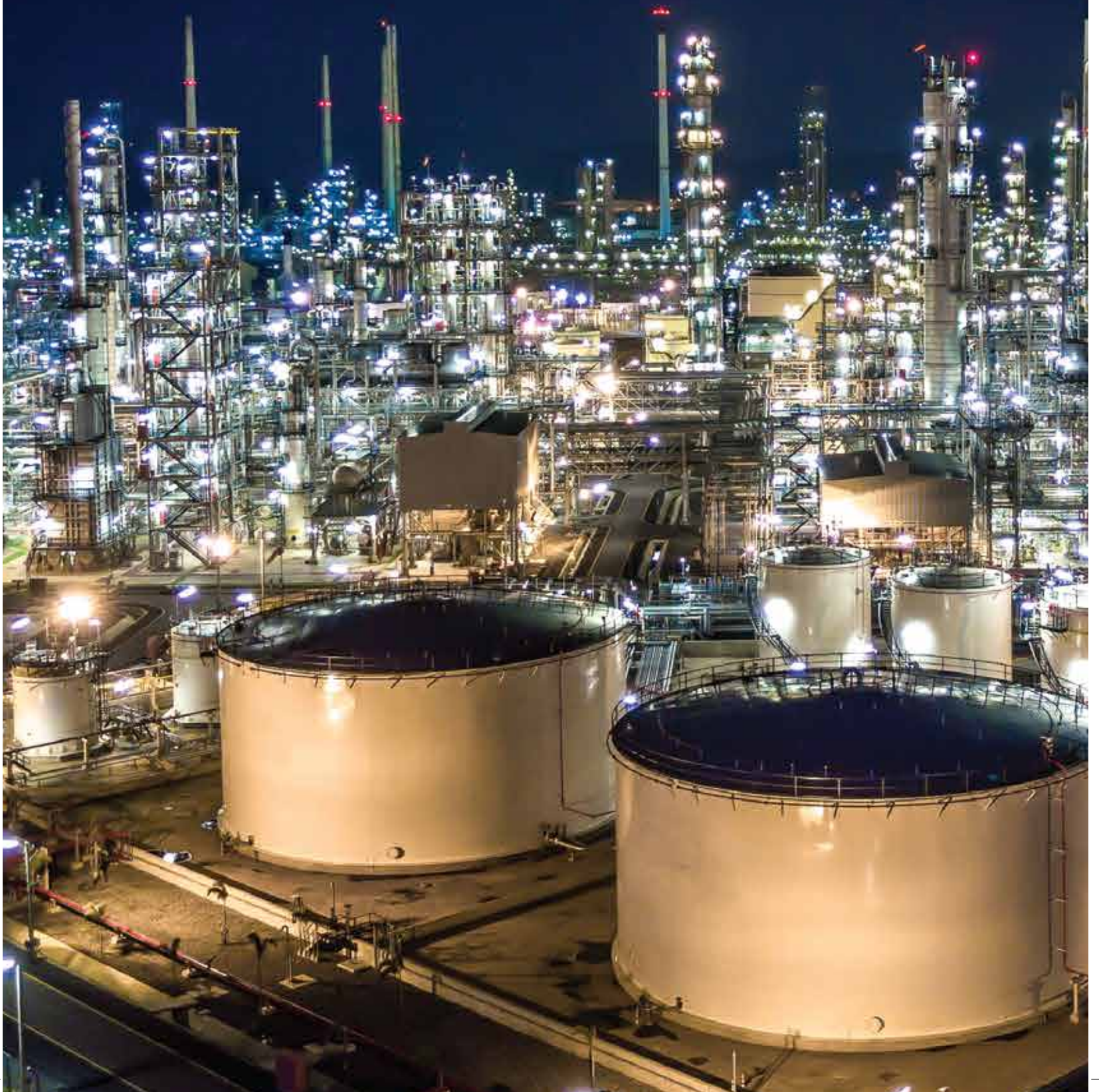


Steel plants have numerous areas and each space has different lighting needs. Cold roll/hot strip mills have high ceilings of 15-20 metres, so long lasting LEDs with good performance works best. Floodlights offer a 10-200lux level which is ideal for outdoor stockyards. Blast furnace and loading/unloading areas need an average of 100lux light fixtures. Also, for inspection areas 300lux levels are recommended and for the battery room corrosion proof fixtures must be used.

Steel plants generally consists of the following areas:

- Cold Roll Mills
- Hot Strip Mills
- Outdoor Stockyards
- Loading and Unloading Docks
- Blast Furnace Working Areas
- Inspection Areas





Typical Areas in Power Generating Plants are:



Coal Conveyor



Boiler Building



Turbo Generator Building



Electrostatic Precipitator



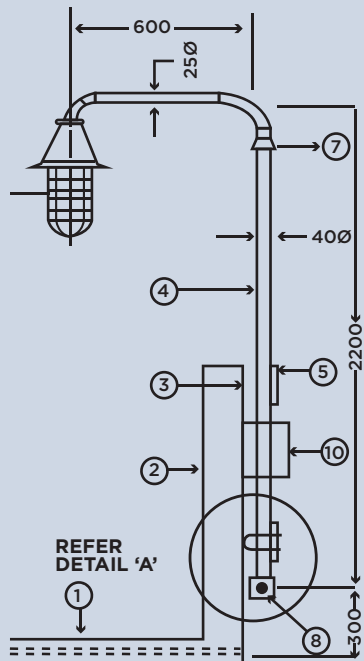
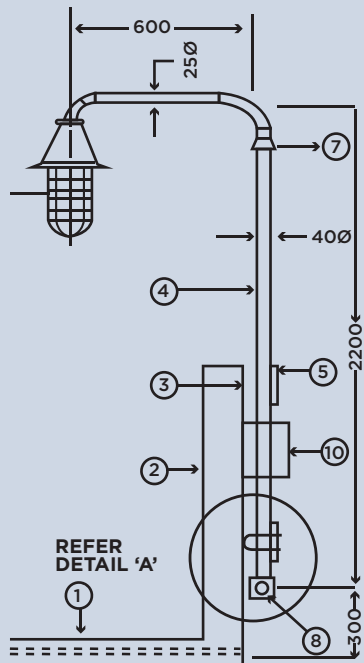
Cooling Towers



Switchyard



Building Periphery



In the power industry, mostly coal handling areas require well glass lighting fixtures. Also, for the conveyor belt 50-70lux level fixtures are required and 100lux level fixtures are recommended for transfer points.

Coal Conveyor

- Open Conveyor
- Close Conveyor
- Mounting Height: 2-3.5m
- Conveyor Belt: 50-70lux
- Transfer Points: 100lux



BOILER BUILDING

- Platform and Staircases: 100-150lux
- Well Glass Luminaires Preferred

► TG (TURBO GENERATOR) HALL

In power plants, the turbo generator hall requires high-bay or medium bay lighting solutions to achieve a 200lux level of illumination. Battens with reflectors are used in the switchgear room to achieve a 200lux level of illumination, while the control room demands a 400-500lux which is gained using recessed 2 x 2 feet diffused luminaires.

TG (Turbo Generator) Hall

- Houses Vital and Expensive Equipment
- Typical Height: 12-15m
- Illumination Level: 200lux





Switchgear Rooms: Illumination Level: 200lux



Control Room: Illumination Level: 400-500lux

▶ ELECTROSTATIC PRECIPITATOR

The Electrostatic Precipitators (ESP) are extensively used in thermal/steam power plants. Hence, dust and jet proof well glass products with a 150lux level are suitable.

Electrostatic Precipitator

- Recommended Illumination Levels: 150lux
- Dusty Environment
- Dust and Jet Proof Well Glass Product Suitable





► COOLING TOWERS

Cooling towers can vary in size i.e. from small roof-top units to large structures, so dust and jet proof well glass fixtures with a 150lux level of illumination are recommended. Also, facade lighting of cooling towers creates a visually appealing ambience during the night time.

Cooling Tower

- Recommended Illumination Levels: 150lux
- Highly Humid Environment
- Dust and Jet Proof Well Glass Products are Ideal
- Facade Lighting Opportunities

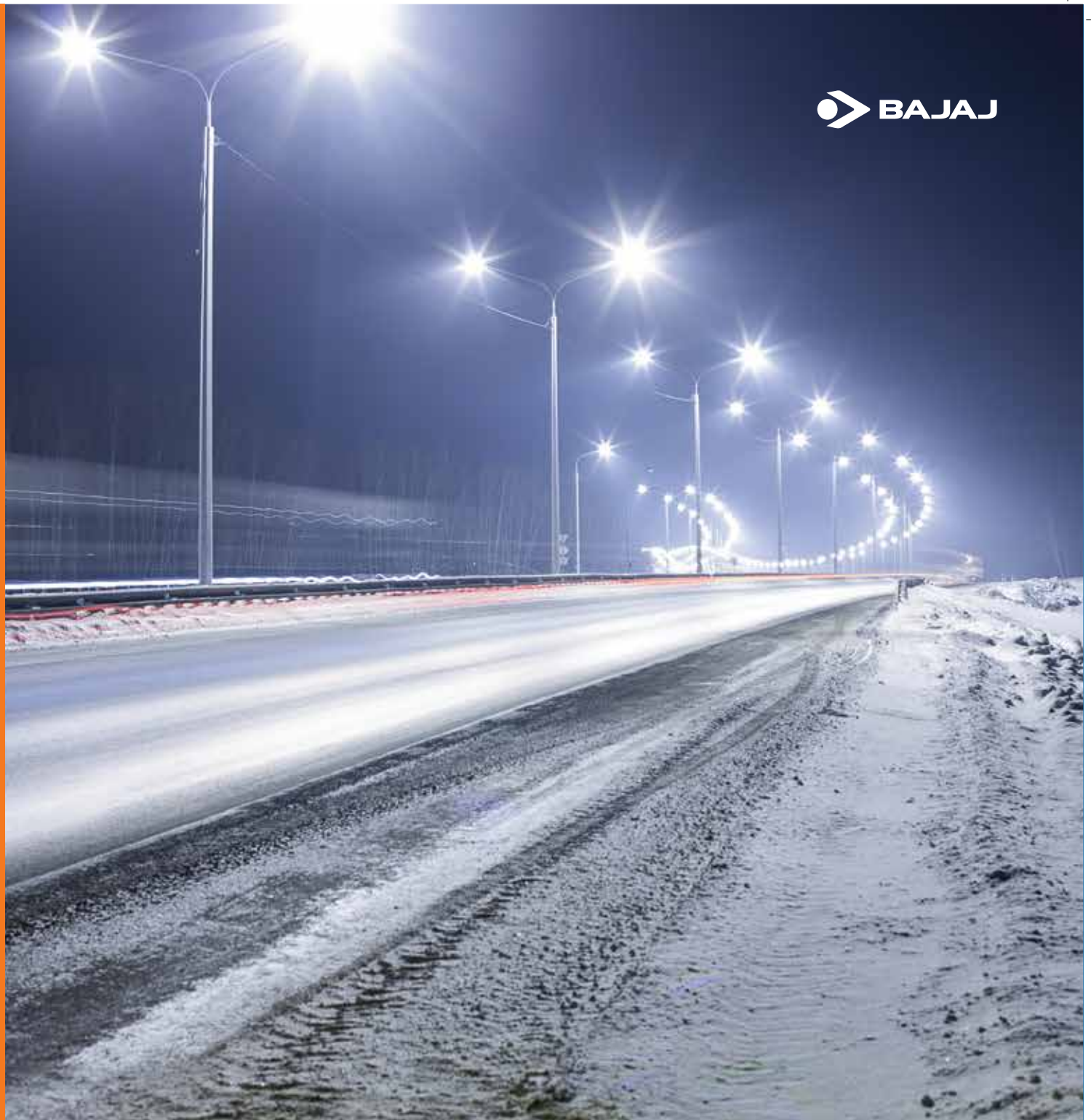
► SWITCHYARD

Switchyards are vast open areas, hence floodlights with good ingress protection and a 50-100lux level of illumination are best recommended.

Switchyard Area

- General Recommended Illumination Levels: 50-100lux
- Flood Lights with Good Ingress Protection are Ideal
- Flood Light Aiming Critical





► BUILDING PERIPHERY

Peripheral areas consist of the space surrounding the building. Hence, 20lux level streetlights are recommended.

Peripheral Area

- Illumination Level: 20lux
- Streetlights are Ideal

BAJAJ'S OFFERINGS

► HIGHBAY



DAZZLE



BLAZE



TENTO

► WELL GLASS & BULKHEAD



VERDANT NANO



VERDANT NEO



WEE PLUS

▶ UNDER CANOPY



COSMO

▶ CLEANROOM

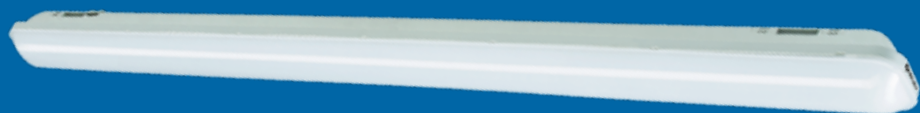


PRISTINE

▶ LINEAR + BATTEN



TRENDY

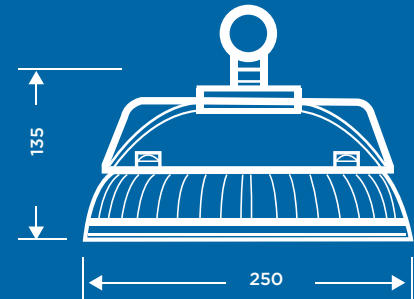


BATTEN

► HIGHBAY - TENTO .nxt



Product Dimensions Diagram



FEATURES:

System wattage:

55/80/100/120/150W

Lumen packages:

6000/8800/11000/13200/16500 lm

Efficacy:

>110 lm/W

Four stage electrical protection:

- * Over voltage & under voltage protection
- * Short circuit protection
- * Reverse polarity protection
- * Over temperature protection

CRI: >80

THD: <10%

Beam Angle: Narrow Beam & Medium Beam
Available in 60° (150W/200W)
and 90° beam angle

Life:

50000 Hrs. @ L70

Input surge protection:

4kV Internal & 10kV External (Optional)

APPLICATIONS:

- Food Processing Plant
- Dairies
- Chemical Industries
- Laboratories
- Paint Factories



IP protection
65

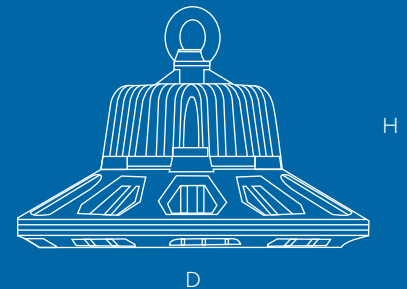


IK protection
10

► HIGHBAY - BLAZE



Product Dimensions Diagram



	D	H
BGHBM 80/100W XE	260	177.5
BGHBM 120/150W XE	330	212
BGHBM 200W XE	400	225

(All dimensions in mm)

FEATURES:

System wattage:

80/100/120/150/200W

Lumen packages:

9600/12000/14400/18000/24000 lm

Efficacy:

>120 lm/W

Four stage electrical protection:

- Over voltage & under voltage protection
- Short circuit protection
- Reverse polarity protection
- Over temperature protection

CRI: >70

Beam Angle: Available in 60° (100/150/200W) and 120° (80W/120W) beam angle

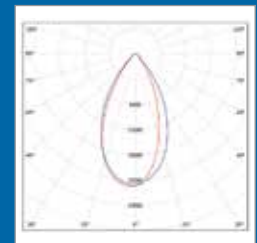
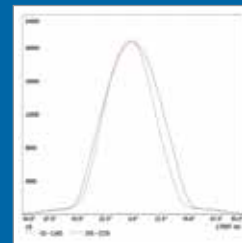
Life:

50000 Hrs. @ L70

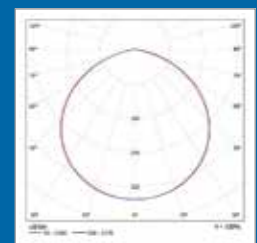
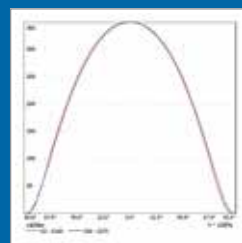
Input surge protection:

4kV Internal & 10kV External (Optional)

Polar Line Diagram



60° Beam Angle



120° Beam Angle

APPLICATIONS:

- Food Processing Plants
- Dairies
- Chemical Industries
- Laboratories
- Paint Factories



IP protection
65

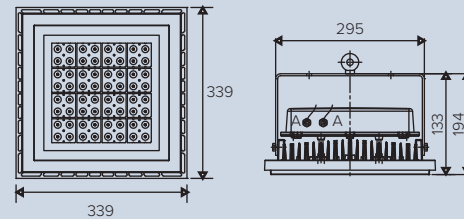


IK protection
05

► HIGHBAY - RAYS

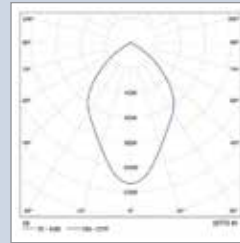


Product Dimensions Diagram



BGPPH 80/100/120/150W
Wattage : 55W
(All dimensions in mm)

Polar Line Diagram



FEATURES:

System wattage:

80/100/120/150/240W

Lumen packages:

9600/12000/14400/18000/24000 lm

Efficacy:

>120 lm/W

Four stage electrical protection:

- * Over voltage & under voltage protection
- * Short circuit protection
- * Reverse polarity protection
- * Over temperature protection

CRI: >70

Beam Angle: Available in 60° (150/200W) and 120° beam angle

Life:

50000 Hrs. @ L70

Input surge protection:

4kV Internal & 10kV External (Optional)

APPLICATIONS:

- Manufacturing Bays
- Warehouses
- Indoor Stadiums
- Railway Concourse Halls
- Food & Beverages Facilities (PC diffuser)



IP protection
65

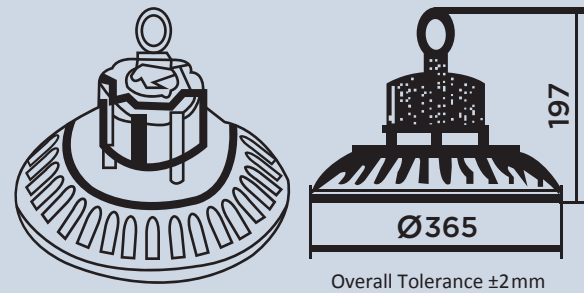


IK protection
06

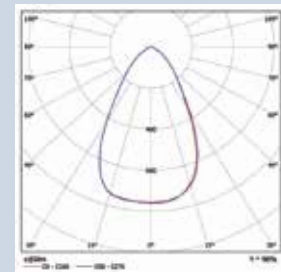
► **HIGHBAY - DAZZLE**



Product Dimensions Diagram



Polar Line Diagram



FEATURES:

System wattage:

150W

Lumen packages:

21000 lm

Efficacy:

>120 lm/W

Four stage electrical protection:

- * Over voltage & under voltage protection
- * Short circuit protection
- * Reverse polarity protection
- * Over temperature protection

CRI: >80

Beam Angle: Narrow Beam Available in 60°

Life:

50000 Hrs. @ L70

Input surge protection:

4kV Internal & 10kV External (Optional)

USPs:

- Light Weight
- CCT: 5665K ± 355K
- Multi Mounting Options: Eye bolt & Bracket
- Sensor & Dimming Options

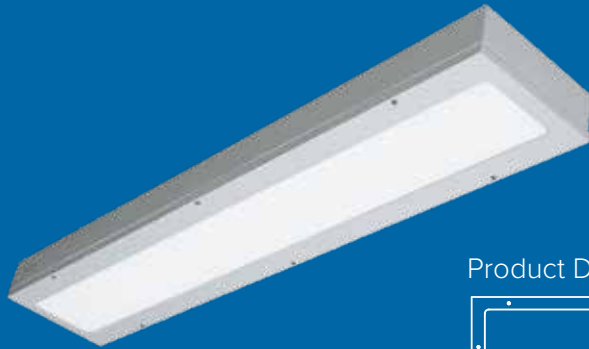


IP protection
65

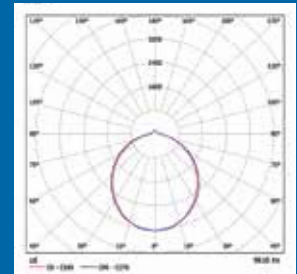


IK protection
07

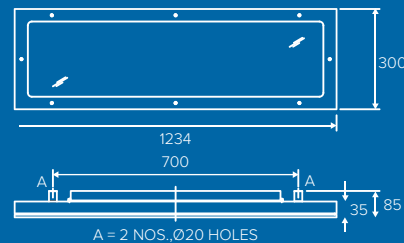
► TRENDY - LINEAR HIGHBAY



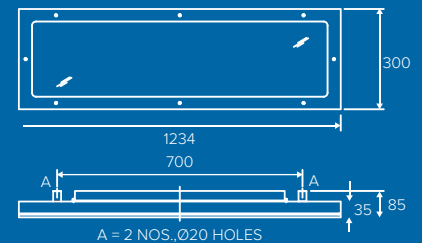
Polar Line Diagram



Product Dimensions Diagram



BTHBX 100W LED WH



BTHBX 120W LED WH

(All dimensions in mm)

FEATURES:

- Energy saving pendent multifunctional luminaire
- The elegant design enhances the aesthetic and suits indoor usage
- Housing: CRCA frame with opal diffused acrylic for smooth & uniform distribution of light
- Frame: Hingeable CRCA frame for easy maintenance
- Mounting bracket: Provided with two nos. of bracket having $\text{Ø}20$ mm holes for conduit mounting. Also suitable with wire suspension system
- Maintenance from front side
- Driver: Constant current output driver, operating range 150V-265V AC supply voltages
- LED: 5700K \pm 300K
- Degree of protection: IP 54 (from front side)

APPLICATIONS:

- Departmental Stores & Control Rooms
- Manufacturing Industries
- Textile Manufacturing
- Automobile & Ancillary Manufacturing
- Warehouses
- Railway Concourse Halls, Railway Platforms, etc.

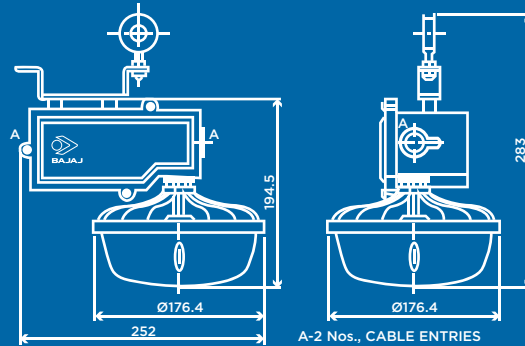


IP protection
54

► WELL GLASS - VERDANT NEO

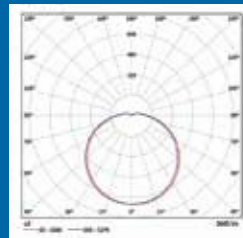


Product Dimensions Diagram



Dimensions in mm Tolerance ± 5 mm

Polar Line Diagram



FEATURES:

System wattage:

30/38/40W

Lumen packages:

21000 lm

Efficacy:

>100 lm/W

Input surge protection:

6kV Internal & 10kV External

CRI: >80

THD: <10%

APPLICATIONS:

- Steel & Metal Plants
- Power Plants
- Cement Plants
- Material Handling System

BENEFITS:

- Available in 3 different lumen packages: 95/105/115 lm/W
- More than 60% energy savings plus long lasting performance ensures better light distribution
- Opal diffuser ensures glare-free illumination and has the ability to withstand rough industrial conditions
- The IK 08 impact resistance classification prevents diffuser from breakage during movement or at site installations
- For quick installation, lighting wiring with a loop in the cable arrangement works best with lesser material in use



IP protection
65

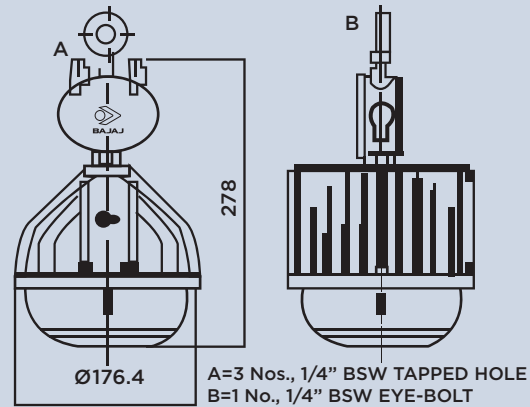


IK protection
07

▶ WELL GLASS - VERDANT NANO

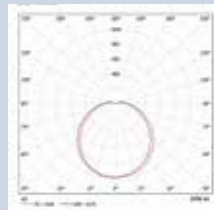


Product Dimensions Diagram



Dimensions in mm Tolerance ± 5 mm

Polar Line Diagram



FEATURES:

System wattage:

27/35/42W

Efficacy:

>100 lm/W

Input surge protection:

4kV Internal & 10kV External

CRI: >70

THD: <10%

Net Weight: 1Kg (Light Weight)

APPLICATIONS:

- Steel & Metal Plants
- Power Plants
- Cement Plants
- Material Handling System

BENEFITS:

- Available in 2 different CCT (WH & WW [optional])
- More 60% energy savings, long lasting performance and special features to ensure better light distribution
- Ability to withstand rough industrial conditions opal diffuser ensures glare free illumination
- The IK 08 impact resistance classification prevents diffuser from breakage during movement or at site installations
- Loop in lighting wiring is the modern cabling arrangement for quick installation with lesser material



IP protection
65

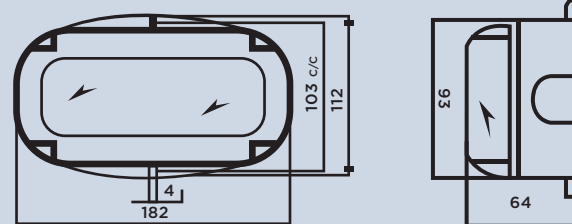


IK protection
07

▶ LED BULKHEAD LUMINAIRE - WEE PLUS

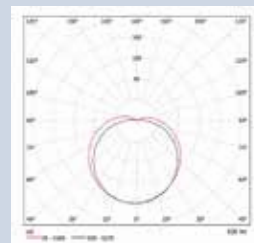


Product Dimensions Diagram



Overall Tolerance $\pm 2\text{mm}$

Polar Line Diagram



FEATURES:

- Graphite grey (RAL7024) powder coated pressure die-cast aluminium alloy housing
- Diffused polycarbonate held with a silicon gasket
- Fins provided on aluminium housing for better thermal management
- LEDs are mounted on pressure die-cast aluminium housing
- LED specification: Make - NICHIA/Equivalent
- Correlated Colour Temperature: 5700K \pm 300K
- Inbuilt constant current driver upto 2.5kV surge protection
- The luminaire is complete with all accessories wired upto a terminal block
- PG7 cable entry provided to ensure better ingress protection

APPLICATIONS:

- Porches, Basements
- Staircases, Balconies, etc.



IP protection
65

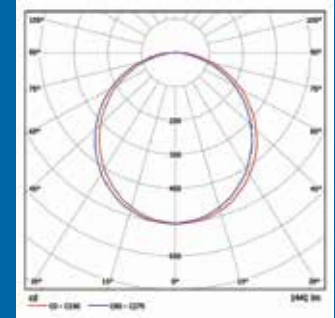


IK protection
06

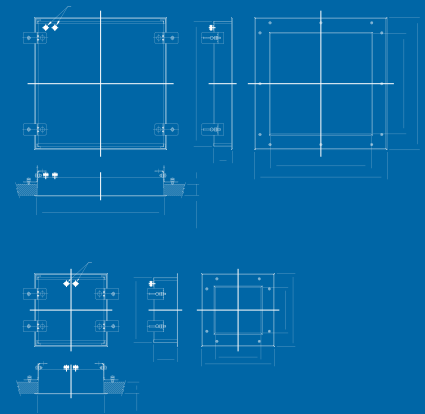
► CLEANROOM FAMILY - PRISTINE SERIES



Polar Line Diagram



Product Dimensions Diagram



FEATURES:

Wattage:

20/40/60/80W

System Efficacy:

>100 lm/W

Input surge protection:

3kV Internal & 10kV External (Optional)

CRI: >80

THD: <10%

Options:

Front & bottom opening options for safe & easy maintenance

APPLICATIONS:

- Pharma Companies
- Food & Beverages
- Kitchen/Back Offices
- Electronic Equipment Manufacturing
- Healthcare (Operation Theatres/ICU)
- With Screws Bottom Frame
- Screw Less Bottom Frame
- SS Bottom Frame

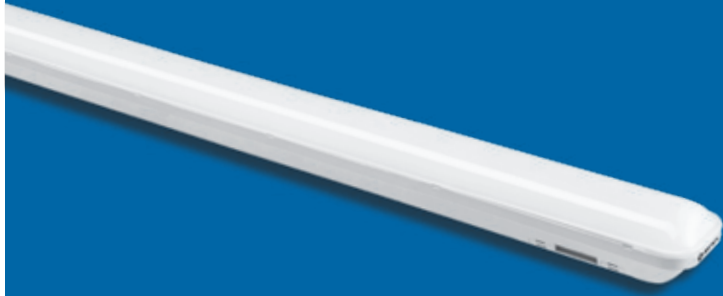


IP protection
65



IK protection
06

▶ BATTEN SERIES



FEATURES:

System Wattage:

20/40W

Lumen Flux:

2200/4400 lm

Efficacy:

>100 lm/W \pm 10%

Correlated Colour Temperature:

6500K \pm 500K

CRI:

>70/>75

Life:

50,000 Hrs.

Operating Temperature:

-10° C to +50° C

Beam Angle:

120°

Power Factor:

\geq 0.9

THD:

<10%

Input surge protection:

4kV Internal & 10kV External (Optional)

Options:

Warm CCT Available

APPLICATIONS:

- Industrial Activities and Crafts:
Metal Working and Processing

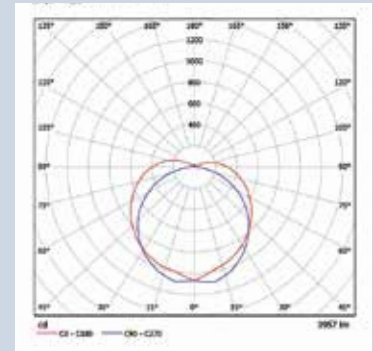


IP protection
20

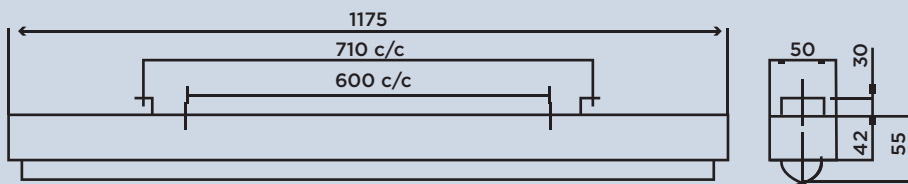
▶ LINEA LED- LINEAR PRIME



Polar Line Diagram



Product Dimensions Diagram



FEATURES:

- CRCA steel sheet housing comprising of White (WH) LEDs connected in series parallel
- Opal diffuser is supported by CRCA end plates
- Driver: Constant current output driver, operating range 150-275V AC supply voltages
- Suitable for Surface/Suspended mounting
- Finish: White powder coated (RAL 9016)
- Wattage: 40W
- System Efficacy: >95 lm/W

APPLICATIONS:

- Shopping Malls
- Hotels & Restaurants
- Offices & Banks
- Education Institutions, etc.



IK protection
54

▶ SINGLE/TWIN 18W LED TUBELIGHT LUMINAIRE



FEATURES:

- This corrosion resistance LED Tubelight luminaire comprises SS toggles and cover made of polycarbonate
- Clear polycarbonate cover is fixed to the housing by toggles
- CRCA gear tray cum reflector is finished in white powder coating
- Completely prewired with accessories up to terminal block
- Suitable for single/twin 18W LED Tube (BLRB 18W CWc-112432) having one-side live connection
- Finish: Housing Grey

APPLICATIONS:

- Dairies
- Chemical Industries
- Food Processing Plant
- Laboratories
- Paint Factories
- Paper Mills, Textile Mills
- Car Washing Bay
- Catering Kitchens
- Grain Shops, etc.



IP protection
65

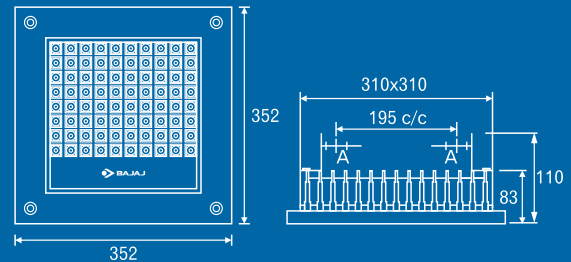


IK protection
08

► COSMO

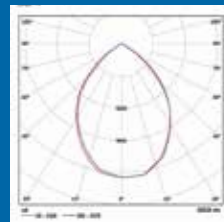


Product Dimensions Diagram



Overall Tolerance $\pm 2\text{mm}$

Polar Line Diagram



FEATURES:

- Epoxy powder coated pressure die-cast aluminium housing
- CRCA sheet steel recessed frame, heat resistance clear toughened glass and silicon gasket fixed with SS screws
- The potted driver used is built-in open/short circuit protections

COSMO UNDER CANOPY LED LUMINAIRE:

- Suitable for petrol stations, refineries and manufacturing industries with low bay application areas
- Available in 72W, 80W and 100W
- Direct replacement for conventional MH 250W HID Luminaire
- Designed with special secondary optics (lenses) for uniformity
- Light Weight, with Mounting brackets (L brackets)
- Voltage Surge Protections (5kV Internal & 10kV External)

FOR 80W:



IP protection
65



IK protection
05

FOR 100W:



IP protection
65










IK protection
07

► TECHNICAL SPECIFICATION

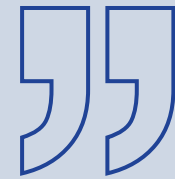
Product	Product Name	Available Wattage	CRI	CCT	Efficacy	THD	IP Rating	IK Rating	Surge Protection
	HIGHBAY - TENTO .nxt	55W	>80	5700K ± 300K	>110 lm/W	<10%	IP65	IK10	4kV
		80W	>80	5700K ± 300K	>110 lm/W	<10%	IP65	IK10	4kV
		100W	>80	5700K ± 300K	>110 lm/W	<10%	IP65	IK10	4kV
		120W	>80	5700K ± 300K	>110 lm/W	<10%	IP65	IK10	4kV
		150W	>80	5700K ± 300K	>110 lm/W	<10%	IP65	IK10	4kV
	HIGHBAY - BLAZE	80W	>70	5700K ± 300K	>120 lm/W	<10%	IP65	IK05	4kV
		100W	>70	5700K ± 300K	>120 lm/W	<10%	IP65	IK05	4kV
		120W	>70	5700K ± 300K	>120 lm/W	<10%	IP65	IK05	4kV
		150W	>70	5700K ± 300K	>120 lm/W	<10%	IP65	IK05	4kV
		200W	>70	5700K ± 300K	>120 lm/W	<10%	IP65	IK05	4kV
	HIGHBAY - RAYS	80W	>70	5700K ± 300K	>120 lm/W	<10%	IP65	IK06	4kV
		100W	>70	5700K ± 300K	>120 lm/W	<10%	IP65	IK06	4kV
		120W	>70	5700K ± 300K	>120 lm/W	<10%	IP65	IK06	4kV
		150W	>70	5700K ± 300K	>120 lm/W	<10%	IP65	IK06	4kV
		240W	>70	5700K ± 300K	>120 lm/W	<10%	IP65	IK06	4kV
	HIGHBAY - DAZZLE	150W	>80	5665K ± 355K	>120 lm/W	<10%	IP65	IK07	4kV
	TRENDY - LINEAR HIGHBAY	100W	>70	5700K ± 300K	>100 lm/W	<10%	IP54	NA	3kV
		120W	>70	5700K ± 300K	>100 lm/W	<10%	IP54	NA	3kV
	WELLGLASS - VERDANT NEO	30W	>80	5700K ± 300K	>100 lm/W	<10%	IP65	IK07	6kV
		38W	>80	5700K ± 300K	>100 lm/W	<10%	IP65	IK07	6kV
		40W	>80	5700K ± 300K	>100 lm/W	<10%	IP65	IK07	6kV

► TECHNICAL SPECIFICATION

Product	Product Name	Available Wattage	CRI	CCT	Efficacy	THD	IP Rating	IK Rating	Surge Protection
	WELLGLASS - VERDANT NANO	27W	>70	5700K ± 300K	>100 lm/W	<10%	IP65	IK07	4kV
		35W	>70	5700K ± 300K	>100 lm/W	<10%	IP65	IK07	4kV
		42W	>70	5700K ± 300K	>100 lm/W	<10%	IP65	IK07	4kV
	LED BULKHEAD LUMINAIRE - WEE PLUS	10W	>80	5700K ± 300K	>80 lm/W	<10%	IP65	IK06	2.5kV
	CLEANROOM FAMILY - PRISTINE SERIES	20W	>80	5700K ± 300K	>100 lm/W	<10%	IP65	IK06	3kV
		40W	>80	5700K ± 300K	>100 lm/W	<10%	IP65	IK06	3kV
		60W	>80	5700K ± 300K	>100 lm/W	<10%	IP65	IK06	3kV
		80W	>80	5700K ± 300K	>100 lm/W	<10%	IP65	IK06	3kV
	BATTEN SERIES	20W	>80	6500K ± 500K	>110 lm/W	<10%	IP20	NA	4kV
		40W	>80	6500K ± 500K	>110 lm/W	<10%	IP20	NA	4kV
	LINEA LED - LINEAR PRIME	40W	>70	5700K ± 300K	>95 lm/W	<15%	IP54	NA	3kV
	SINGLE/TWIN 18W LED TUBELIGHT LUMINAIRE	18W	>70	6500K ± 300K	>100 lm/W	<10%	IP65	IK08	4kV
	UNDER CANOPY - COSMO	72W	>70	5700K ± 300K	>100 lm/W	<10%	IP65	IK05	5kV
		80W	>70	5700K ± 300K	>100 lm/W	<10%	IP65	IK05	5kV
		100W	>70	5700K ± 300K	>100 lm/W	<10%	IP65	IK07	4kV



LETTER OF APPRECIATION





LETTER OF APPRECIATION



VOLVO BUSES



Appreciation Letter

Date: - 27/05/2016

To,

M/s Bajaj Electricals Limited
No 16, Bajaj Bhavan, Residency Road
Bangalore - 560086

Date

Telephone indialing

Fax

Our reference

Kind Attn.:- Mr. AJAY B V

We would like take this opportunity to thank M/s Bajaj Electricals Ltd - Bangalore for their support in supply of 100W LED street Light fixtures for Our Plant and we have been using from last 1.5 years. The performance of the LED Light fixtures is very good.

We look forward for a long-term business relationship with M/s. Bajaj Electricals Limited - Bangalore

Thanking You

For: - Volvo India Pvt Ltd (Buses Division) - Bangalore

Pavan Kumar T
(Maintenance Department)

Volvo India Private Limited
Yalochahally, Tavankere Post
Hosakote, Bengaluru - 562 122

Telephone
+91 80 6712 1200

Registration No.
CIN : U50101KA1996PTC024176

www.volvoindia.com

Registered Office
Volvo India Private Limited
Yalochahally, Tavankere Post
Hosakote, Bengaluru - 562 122



LETTER OF APPRECIATION



Central Projects Organisation
ITC Limited
No. 16, Banaswadi Main Road,
Munthiweera Nagar,
Bangalore - 560 005, India
Telephone : 91 80 2298 2201 (5 Lines)
Fax : 91 80 2298 2209 / 2298 2306

Date: 10.05.2016

To,
Bajaj Electricals Ltd.
Kolkata
Kind Attention: Mrs. Sucharita Saha

Subject: Letter of Appreciation

We are using Bajaj Luminaires in our various projects. During the course of the project, the design & technical support extended to us is well appreciated and has made our work smooth and easy.

It is worth mentioning that Bajaj Design Team was present with us in every situation whenever pre-order support was required for our projects.

We look forward to continuous support and relation as business partners for many more projects in future with their improved post delivery service.

We wish them all the very best in their future ventures.

Thanking you,
For ITC Limited

Nilay Mandal




LETTER OF APPRECIATION



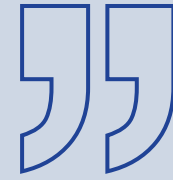
We appreciate the services offered to us from Bajaj Electricals in terms of pre sales services, lighting design support and after sales services.

Bajaj electricals is constantly upgrading us with rapid changes in led technology and better lighting solutions. We have successfully executed many projects with assistance of bajaj design & sales team and are satisfied with the quality of bajaj products.

We are thankful to bajaj electricals luminaire team for all services provided to us and looking forward best assistance, timely co-ordination & support from the team in future also.



LETTER OF APPRECIATION



Date :- 28.05.2016

To

Siddharth Mathur

M/s Bajaj Electricals Ltd

Luminaires Division

M I Road Jaipur

Letter of Appreciation

We at Ultratech cement Ltd kharia khangar, have been using bajaj luminaires regularly and have installed the same at our factories in Rajasthan we are very much happy with the product quality timely support & after sales service.

We appreciate the services offered by m/s Bajaj Electricals Ltd, Luminaires BU right from design stage, which has always been professional.

From our experience over these ten years, we have no hesitation in recommending Bajaj Electricals Ltd- Luminaires team for any office/modern workspace Lighting projects

We look forward for long term association with Bajaj Electricals Ltd.

Thanking You

For Ultratech cement Ltd

Unit : Birla White

N K AGARWAL

Manager (purchase)

For ULTRATECH CEMENT LTD.
(Unit : Birla White)

N. K. Agarwal
Manager (Purchase)
Authorized Signatory



Ultratech Cement Ltd. (Unit : Birla White)
Office: D-7, Shastri Nagar, Indhyar - 342002
Works: Rajasthan Nagar,
P.O. Kharia Khangar - 342606 Dist.: Jodhpur (Raj)

Telephone: Office : +91 291 2430140/2431713
Works: +91 02920-262242/264040
Fax: Office: +91 291 - 2431844
Works: +91 2920 - 264244/264222

Website: www.birlawhite.com

Registered Office: "B" Wing, 2nd Floor, Ahura Centre, Mahakal Caves Road, Andheri (East), Mumbai - 400093, INDIA



LETTER OF APPRECIATION



JSW Steel Limited

Vijayanagar Works :
P. O. Vidyannagar - 583-275,
Dist. Bellary, Karnataka, India.

Phone : +91 8395 250 120-00
Fax : +91 8395 250 132/142
Website : www.jswl.in
CIN - L27102MH1994PLC162825

Appreciation Letter

Date: -25/05/2016.

To,

M/s Bajaj Electricals Limited
No 16, Bajaj Bhavan, Residency Road
Bangalore - 560086

Kind Attn.:- Mr. VINAYA PRABHU

We have been using BAJAJ LED and conventional products extensively in our plant requirements, also we used 42W LED well glass for our new plant expansion. We are happy with the performance of the light fixtures.

We look forward for a long-term business relationship with M/s.Bajaj Electricals Limited - Bangalore

Thanking You

For: JSW Steel Ltd

(R. VENKATESH)
GM - LP MILLS



Part of O. P. Jindal Group

Regd. Office : JSW Centre,
Bandra Kurla Complex,
Bandra (East), Mumbai - 400 051

Phone : +91 22 4286 1000
Fax : +91 22 4286 3000

“ OUR PRESENCE ”

