



 **asianpaints**
BERGER

**PRODUCT
PRESENTATION**



Asian Paints @ GCC

- One of the fastest growing Companies in middle east over the past 4 decades
- 3 world class Manufacturing facilities in UAE, Bahrain & Oman
- Operating in GCC & across CIS-MENA region



Asian Paints @ GCC

Asian Paints Berger has strong roots in GCC, with operations and plants in key locations. Here are some of our important milestones in the region.



BERGER



asianpaints
BERGER



1995

State-of-the-art paint manufacturing plant established in Dubai. With this, the operations were shifted from Asian Paints Berger's earlier base in Sharjah.



2000

Berger (now Asian Paints Berger) begins operations in Oman.



2003

Berger's (now Asian Paints Berger) operations in Bahrain, Qatar, Oman and UAE taken over by industry leader, Asian Paints.



2014

A state-of-the-art paint manufacturing unit opened in Sohar, Oman.



2019

Launch of new corporate brand Asian Paints Berger.

THE ASIAN PAINTS BERGER PRODUCT RANGE

Asian Paints Berger has a wide of range products under various segments:



Interior



Exterior



WPC



Floor Coatings

All Asian Paints Berger products are categorized under:

- Premium
- Value for Money
- Economy

ROYALE | LUXURY INTERIOR EMULSIONS

Royale has been designed to deliver world class décor solutions with unparalleled performance.

Royale has a deep respect for the power that spaces have to transform our lives. Exuding confidence and elegance, our styles suit the discerning taste of our customers.

Royale constantly innovates and evolves our offering, ensuring connections to the desire to move and grow by our customers. Our products have unparalleled quality standards and performance credentials.

At a deeper level, the care of the product development is driven by our belief in responsible and cleaner solutions

The brand values of Royale are:

PERFORMANCE

Functionality of the brand remains at the forefront with cutting edge quality measures. At a deeper level, the care of the product development engages with the customer's values.

SPLENDOUR

It exudes elegance, glamour and inimitable style.

EVOLUTION

A penchant to constantly evolve, grow and challenge the status quo.

THE WORLD OF ROYALE





röyale
ATMOS 



Performance that cares

Launched in 2019, Royale Atmos Health Shield is an ultra-luxury interior finish that is highly innovative.

It has several properties that make it an ideal product for your homes, and addresses the two latent needs of a consumer.

Health



Silver-ion Protection



Reduces Indoor Air Pollutants



Activated Charcoal for Odour Absorption

The "pain" in painting



Spatter Free Technology



Encapsulated Fragrance

WASHABILITY



COLOURS AVAILABLE

1800+



THEORETICAL COVERAGE



On normal masonry surface with a brush/roller

2 COATS

7.33 m²/L
@ 60 microns DFT

AVAILABLE PACKS



APPLICATION

- 1 x Asian Paints Berger AR/PVA Primer
- 2 x Stucco Extra Mix
- If the surface is chalky, it is recommended to use 1 or 2 Coats of Tuff AR Primer Clear.
- 2 x Royale Atmos Health Shield

FINISH



MATT LOW SHEEN HIGH SHEEN HIGH GLOSS

DILUTION

10 - 25%





royale BLING

ULTRA LUXURY GLOSS FINISH



High-Performance Luxury

Royale Bling exudes luxury not only through its excellent sheen, but also through the various properties that make it a product perfect for your paradise. It comes with a 10 years Performance Warranty, making it a paint you can count on forever.



LUMINO-TECH™
Brightest Colours
Total Opacity
Beautiful Finish



Advanced
Stain Guard



Anti-bacterial



Nail Scratch
Proof



Excellent
Sheen





royale BLING

ULTRA LUXURY GLOSS FINISH

WASHABILITY



✓ BEST IN CLASS

HIGH

MEDIUM

LOW

COLOURS AVAILABLE

5000+



THEORETICAL COVERAGE



On normal masonry surface
with a brush/roller

2 COATS

7.33 m²/L

@ 60 microns DFT

AVAILABLE PACKS



1 ltr

4 ltr

18 ltr

APPLICATION

- 1 x Asian Paints Berger AR/PVA Primer
- 2 x Asian Paints Berger Stucco
- 1 x Asian Paints Berger AR Primer (clear recommended)
- 2 x Royale Bling

FINISH



DILUTION

15 - 30%



Performance that Cares

Royale Smart Clean is a premium interior emulsion with a smooth silk finish. It has been designed specifically for easy stain removal and keeps the walls looking beautiful everyday.

The key propositions of Royale Smart Clean are:



Superior Washability



Crack Bridging



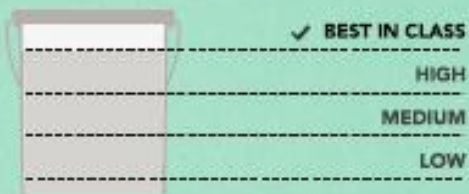
Water-Beading Technology



LUMINO-TECH
Brightest Colours | Total Opacity
Beautiful Finish



WASHABILITY



COLOURS AVAILABLE



THEORETICAL COVERAGE



AVAILABLE PACKS



APPLICATION

- 1 x Asian Paints Berger AR/PVA Primer
- 2 x Stucco Extra Mix
- 1 x Asian Paints Berger AR/PVA Primer
- 2 x Royale Smart Clean

FINISH



DILUTION

15 - 30%





röyale

LUXURY EMULSION



High-Performance Luxury

Moving on to Royale Luxury Emulsion that you are already aware about. It was the first product to be launched under the Royale umbrella.

Royale Luxury Emulsion is a premium interior paint, offering an advanced way to bring colour & style to life.

LUMINO-TECH™
Brightest Colours
Total Opacity
Beautiful Finish

Environment Friendly

Superior Washability

**Low Odour
Low VOC**

While Royale Luxury Emulsion remains your preferred product, there are a few improvisations that have been made in certain propositions of this product- making it even better.

Royale Luxury Matt Emulsion

- Tactile Finish

The new Royale Luxury Matt Emulsion has a soft-touch laminate like feel that gives your walls a velvet finish. So smooth, you can't help but touch the walls more than once.

- Excellent Hiding

The hiding proposition of Royale Luxury Matt Emulsion has been improvised to beat competition.

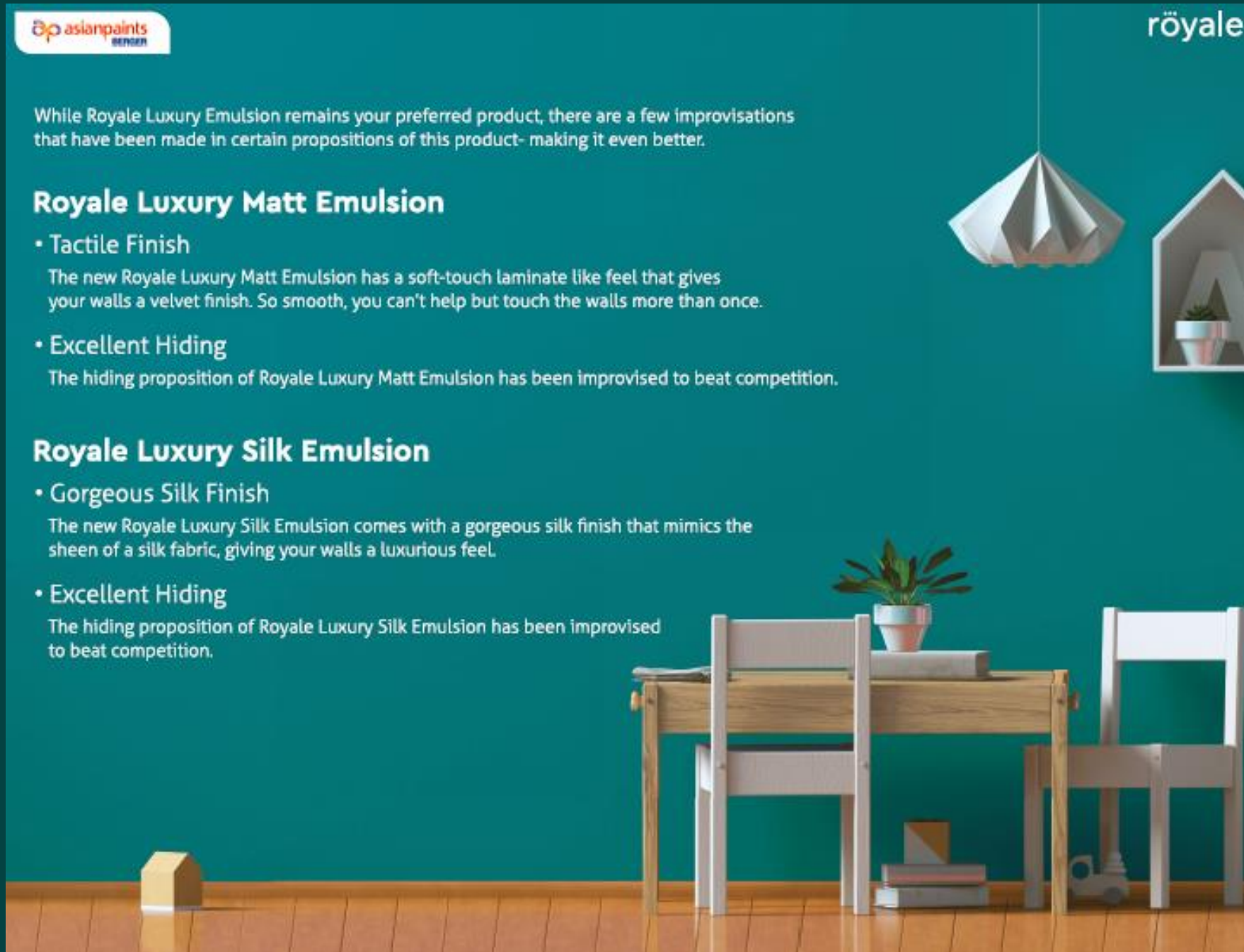
Royale Luxury Silk Emulsion

- Gorgeous Silk Finish

The new Royale Luxury Silk Emulsion comes with a gorgeous silk finish that mimics the sheen of a silk fabric, giving your walls a luxurious feel.

- Excellent Hiding

The hiding proposition of Royale Luxury Silk Emulsion has been improvised to beat competition.



röyale

ROYALE LUXURY MATT

WASHABILITY



COLOURS AVAILABLE

7400+



THEORETICAL COVERAGE



On normal masonry surface
with a brush/roller

2 COATS

7.33 m²/L
@ 60 microns DFT

AVAILABLE PACKS



APPLICATION

- 1 x Asian Paints Berger AR/PVA Primer
- 2 x Stucco Extra Mix
- 2 x Royale Luxury Matt Emulsion

FINISH



DILUTION

10 - 20%



röyale

ROYALE LUXURY SILK

WASHABILITY



COLOURS AVAILABLE

6900+



THEORETICAL COVERAGE



AVAILABLE PACKS



APPLICATION

- 1 x Asian Paints Berger AR/PVA Primer
 - 2 x Stucco Extra Mix
- If the surface is chalky, it is recommended to use 1 coat of AR Primer.
- 2 x Royale Luxury Silk Emulsion

FINISH



DILUTION

10 - 20%





apcolite HEAVY DUTY
ADVANCED EMULSION



Performance you can depend on

Fortified with state-of-the-art technology, see this heavy duty emulsion give your walls the power to stand the test of time, and keep them looking timeless.



Burnish
Resistance



2X
STRONG
2X Film
Strength



Fungus & Mildew
Resistance



Rich Matt
Finish





apcolite ADVANCED HEAVY DUTY EMULSION

WASHABILITY



✓ BEST IN CLASS

HIGH

MEDIUM

LOW

COLOURS AVAILABLE

5700+



THEORETICAL COVERAGE



On normal masonry surface with a brush/roller

2 COATS

6,67 m²/L

@ 60 microns DFT

AVAILABLE PACKS



1 ltr



4 ltr



18 ltr

APPLICATION

- 1 x Asian Paints Berger AR/PVA Primer
- 2 x Asian Paints Berger Stucco
- 2 x Apcolite Advanced Heavy Duty Emulsion

FINISH



MATT

LOW SHEEN

HIGH SHEEN

HIGH GLOSS

DILUTION

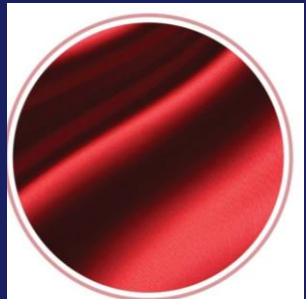
15 - 30%



SELECT EGGSHELL EMULSION | VALUE FOR MONEY EMULSION

Select Eggshell Emulsion is a “Value for Money” product that has various propositions, namely:

- Longest Lasting Sheen
- Smoothest Finish
- Long Lasting Colour
- Excellent Hding
- Excellent Coverage -120m² / drum
- Washable Finish
- Available in more than 1200 colours
- Attractive Pricing



SMOOTHEST
FINISH IN CLASS



DURABLE
SHINE



HIGHER
COVERAGE



WASHABLE



Low VOC



NO ADDED
LEAD
We Added Lead, Mercury, Arsenic & Chromium



ENVIRONMENT
FRIENDLY



VALUE SUPER EMULSION | ECONOMICAL INTERIOR EMULSION

Value Super Emulsion gives excellent coverage and offers great value for money. It has a matt finish and is available in 34 direct shades. It can however, be tinted in more than 800 shades.

3 Main reasons to choose Value Super Emulsion

Better Coverage



Better Value for Money



100% Dilution with Water



23Kgs of Value Super Emulsions covers 120m² versus 5USG of Plastic Emulsion that covers 80m².

Value Super Emulsion has the highest coverage among all economy emulsions present in the market.

1 Drum of Value Super Emulsion is equivalent to 1 drum and 2 gallons of other economy emulsions. Thus, by using Value Super Emulsion, you save 2 gallons of material.

Concentrated Formula offers the dilution proposition, resulting in higher coverage.

The Champion of Coverage



80
sq. mtr
per drum



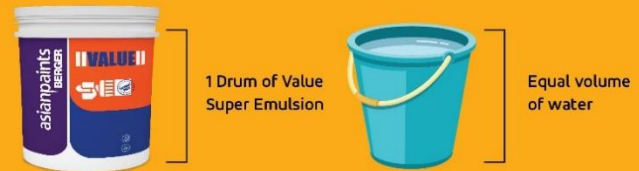
120
sq. mtr
per drum

Better Value for Money



1 drum of Value Super Emulsion = 5 + (1 + 1) USG Plastic Emulsion*

100% Dilution with Water



1 drum of Value Super Emulsion can be 100% diluted with water

50%

More Coverage
120 sq meter per Drum

VALUE
Super Emulsion

SELECT ALL-IN-ONE | HIGH & SEM-GLOSS ENAMEL

Select AIO is a premium enamel designed for interior & exterior applications, where durability, opacity, gloss retention & resistance to wear & tear is required. Its key propositions are:

- Longest Lasting Sheen
- Super High Gloss
- Long Lasting Colour
- Smoothest Finish
- Fast Drying
- Excellent Covering
- Washable
- Hard-Wearing
- Can be applied over wood, masonry and metal substrates.



FASTEST DRYING TIME



DURABLE



**LONGEST
LASTING
GLOSS**



**EXCELLENT
COVERAGE**



**44
LONG
LASTING
GLOSS
COLOURS**



[weathercoat]

TOTAL | EXTERIOR PROTECTION



Weathercoat Ultra
Weathercoat Flex
Weathercoat Stoneshield
Weathercoat Vintage



External Surface challenges

say **NO** to exterior problems





Weathercoat | Advantages

10
YEAR

PERFORMANCE

10+ Year Performance

Weathercoat products are extremely durable. Created using the latest technology, this range of finishes has a 10+ year film integrity span.



TEMPERATURE
GUARD

Temperature Guard

The Weathercoat range contains Temperature Guard, an advanced heat reflecting technology, keeping interiors cooler leading to savings on energy bills.



FLEXIBLE

Flexible

Weathercoat range products are flexible with crack bridging properties, flexing with extremes in temperature keeping your walls crack free.



ANTI-FADING

Anti-fade Formula

All Weathercoat products are formulated with advanced UV resistant pigments which protect your walls and prevent the colour from fading.



DIRT REPELLENT

Dirt Repellent

Weathercoat contains advanced dirt repellent properties, so there is less dirt pick up keeping your walls looking clean and pristine for a longer period of time.



ANTI-CARBONATION
SHIELD

Anti-Carbonation

Weathercoat range of products offer anti-carbonation protection, a non-porous film which prevents carbon dioxide from entering the walls and causing corrosion.



Environment Friendly

The Weathercoat range of finishes by Berger Paints have been created using the technology producing high standard products that are low VOC and better for the environment.



[weathercoat]

TOTAL | EXTERIOR PROTECTION

ULTRA

MATT | SILK | GLOSS

[weathercoat]

TOTAL | EXTERIOR PROTECTION

Luxury Smooth Finish

A pure acrylic emulsion based exterior wall coating formulated with high quality weather durable pigments and reinforced with anti-microbial agents. It is a VOC free product.

Technical Data:

Finish : Smooth

Sheen Variants : Matt, Silk and Gloss

Colours : Wide range

Volume Solids : 39 ± 2% (Silk & Matt)

: 37 ± 2% (Gloss)



Features

- Exclusively formulated for the **Middle Eastern climate**
- Delivers 10 years+ performance and withstands the harshest of climatic conditions
- Provides crack-bridging technology, covering hairline cracks upto 2mm
- Excellent Dirt Pick Up Resistance
- Due to its anti carbonation properties, Weathercoat Ultra safeguards the walls against corrosion.
- Delivering superior UV resistance
- Weathercoat Ultra contains both Temperature Guard and anti-fade protection
- Keeps interiors cooler by reflecting the heat
- Ensures a smooth finish and long-lasting vibrant colour.
- Has anti-fungal properties
- "Complete solution" for your exterior needs.

Typical Paint System:

A. 1 coat of Weathercoat Primer +
2 coats of Weathercoat Ultra (Matt/Silk/Gloss)

B. 1 coat of Weathercoat Penetrating Primer +
2 coats of Weathercoat Ultra (Matt/Silk/Gloss)

[weathercoat]

TOTAL | EXTERIOR PROTECTION

Flextex - Fine/Medium/Ultra

Elastomeric Anti carbonation Coating

Weathercoat Flex (Tex Ultra) is a high performance elastomeric water-based coating formulated based on pure and 100% acrylic emulsion and light and weatherfast pigments, superior fine quality quartz chips.

Technical Data:

Volume Solids: 47 to 49 +2 %

Colour: Limited range, including white

Finish: Low Sheen and fine/Medium/Ultra type texture



Features

- Weathercoat Flextex has a **10 year performance** ensuring lasting retention of flexibility.
- Flextex offers **crack-bridging** technology, covering large cracks ~ 2.85mm.
- Flextex offers very **high UV resistance** and **colour retention**.
- Weathercoat Flextex is highly resistant to **algae and fungi**.
- Flextex has an advanced **anti-carbonation system** safeguarding against corrosion.
- Flextex has improved resistance to **dirt pick-up** through the use of surface curing technology.
- **100% pure acrylic**, Flextex is environment friendly.

Typical Paint System:

A. 1 Coat x Weather Coat Flex Primer

B. 2 Coat x Weather Coat Flex Tex Fine/Medium/Ultra

[weathercoat]

TOTAL | EXTERIOR PROTECTION

Stoneshield

Luxury Signature Finish

Weathercoat Stone Shield is a Textured coating with high quality quartz aggregates and colored chips based on pure & 100% acrylic binder

Technical Data:

Volume Solids: 67 +2 %

Colour: Limited range and direct colour



Features

- Hard wearing and highly **durable**.
- Stoneshield is easy to apply, making it **cost effective** when compared to marble.
- **Ideal finish** for
 - ✓ Villas
 - ✓ Mosques
 - ✓ Commercial structures such as hotels, shopping malls, hospitals and schools.
- Stoneshield delivers an **ultra-luxurious marblesque** finish to any building.

Typical Paint System:

- Surface Preparation - Surface should be free of loose dust particles and lattice
- 1 Coat X Stoneshield Primer application with roller
- 2 Coat X Stoneshield secondary coat application with Hopper Gun
- 2 Coat X Stoneshield Glazecoat application with roller

[weathercoat]

TOTAL | EXTERIOR PROTECTION

Vintage

Luxury Signature Finish

Weather coat Vintage has high quality exterior durable polymers, weather resistant pigments, high performance biocides & special quality of quartz sand. It imparts excellent exterior durability, color retention, resistance to efflorescence and algae/fungal growth to the coating.

Technical Data:

Sheen Variants : Matt, Smooth

Colours : Limited range of colours

Volume Solids : 65 + 2 %



Features

- Weathercoat Vintage from Berger Paints combines the best of both worlds:
 - ✓ The aesthetics of **old world Grandeur**
 - ✓ The benefits of **today's technology**.
- It performs the role of a superb **decorative** plaster and finish
- It combines **decoration and protection** in one
- With the added attraction of **vintage looks**.

Typical Paint System:

- 1 coat x Vintage Alkali Resistant Primer.
- 2 coats of Weathercoat Vintage Topcoat [As per desired effect].
- 2 coats x Weathercoat Vintage Glaze Coat (Optional).

FOR HOMES THAT
DON'T AGE WITH TIME.



TUFF

ADVANCED EXTERIOR

The all-new TUFF Advanced Exterior

Loaded with world-class features, this superior exterior emulsion makes your home resilient to the elements of nature. So that even as years pass by, your home stands looking as good as new.



TUFF

 | ADVANCED
EXTERIOR

TUFF Acrylic Topcoat-Highgloss is extremely durable with an appealing finish that is easy to apply and comes in a variety of shades that suit the Middle Eastern environment.



A high performance coating.
Thermoplastic & water-repellent.
Good resistance against
chemicals like chloride, sulphate.
Ideal for protection of masonry
surfaces.



TUFF

ADVANCED
EXTERIOR



LUXACRYL | TUFF ACRYLIC TOP COAT HIGH GLOSS (SB)



5 YEAR
PERFORMANCE

5 Year Performance

Tuff Advanced Exterior Promise of 5 years performance against flaking and chalking, protecting the exteriors in the Middle Eastern Climate



UV
PROTECTION

UV Protection

Tuff advanced Exteriors is based on Pure acrylic binder, which protects the film against any degradation from the harsh Ultra violet rays in GCC kind of geography, and the film remains intact for years together.



COLOUR
GUARD

Colour Guard

Only exterior grade pigments used in TUFF ACRYLIC TOP | COAT – HIGH GLOSS (SB) ensures that the colour retains its long lasting looks for longer, in the middle eastern climate

EXCELLENT
SCRUB RESISTANCE

Excellent Scrub Resistance

Tuff is formulated adequately with the best quality binders, which keeps the film undeterred against any erosion caused by the exterior factors like sand, wind or sandstorm.





**GET MORE OUT OF
EVERY CAN**



VALUE
Exterior Emulsion

SELECT TEXTURES

Select Exterior Texture Collection offers a wide range of texture coatings suitable for decoration & protection of masonry, brickwork, plaster, asbestos & timber surfaces. These finishes combine finest aesthetic appeal with exceptional toughness.

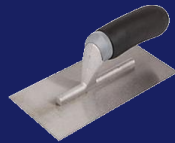
Select Exterior Textures include 5 different finishes:

- Fine
- Medium
- Heavy
- Tartaruga
- Rustic Décor

Roller Application



Trowel Application



Select Advantages:



Exciting Décor Options



Covers cracks & undulations



Tough & UV Resistant



Longer Life





WATERPROOFING SOLUTIONS



SMARTCARE
DAMP PROOF
Durable Exterior Liquid Waterproofing Membrane



Waterproof



Heat Reduction



Anti Carbonation

SmartCare Damp Proof is a fiber reinforced elastomeric liquid applied water proofing membrane. It is formulated with select elastomeric and resilient acrylic polymers and reinforcing polyester fibers. Upon curing, it forms a thick, seamless, durable membrane thus offering ultimate waterproofing.



PRODUCT BENEFITS



WATER PROOFING

Waterproofing protection of upto 7 bars hydrostatic pressure.



CRACK BRIDGING

Unmatched crack bridging ability due to elastomeric properties.



MECHANICAL STRENGTH

Reinforced with glass fibers for superior abrasion resistance.



ADHESION

Strong adhesion to masonry substrates.



HIGH SHEEN

High sheen, brilliant white colour and thick coat results in high levels of heat reflectance.



ANTI CARBONATION

Reduces carbon dioxide and chloride ion diffusion thus protecting re-bars against corrosion.



USE & MAINTENANCE

Single pack, easy to apply and simple re-coating.



PERFORMANCE

7 years waterproofing performance on terraces and vertical surfaces.



SMARTCARE DAMP BLOCK 2K

2K CEMENTITIOUS WATERPROOFING



Waterproof



Vapour Breathable



Flexible

SmartCare Damp Block 2K is a two-component acrylic polymer-modified cementitious high performance coating. This product can be used for both positive & negative side waterproofing due to its excellent bonding, good waterproofing and unmatched resistance to hydrostatic pressure.

PRODUCT BENEFITS



WATER PROOFING

Resists up to 5 bars of positive hydrostatic pressure



SEAMLESS COAT

Forms a seamless coat without any joints



ELONGATION

Highly elastic film which provides elongation up to 100%



ADHESION

Excellent bond strength with cementitious substrates



ANTI-EFFLORESCENCE

Provides lasting protection against efflorescence



HIGH SOLID CONTENT

Acrylic Polymer with high solid content



ANTI-CARBONATION

It protects concrete against carbonation



USAGE

Easy to apply

UNYVERSEAL SEALANTS RANGE



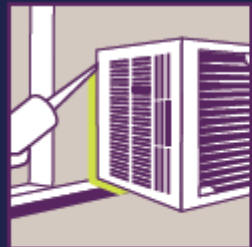
 SMARTCARE
UNYVERSEAL NEUTRAL
ALL PURPOSE NEUTRAL SILICONE SEALANT

A durable and odourless neutral silicone sealant for sealing of building, glass and sanitary joints.

Areas of Usage:

- Sealing glass, building, sanitary joints and metallic joints.
- Sanitary – Wash Basins, Bathtubs, Showers, Toilets & Kitchens.
- Joints between sanitary fittings, wall and floor.
- Joints in the kitchen (such as at walls, platforms, floors, work surfaces and cookers).
- Joints on pipe passages.

Substrates: Wood, metal, masonry, glass, sanitary, glazed surfaces, unplasticized plastics (polyester).



METALS



MASONRY JOINTS



GLASS & WOOD



SANITARY JOINTS



An acrylic emulsion based plastic elastic sealant for sealing building joints that can be top coated with a water-based paint.

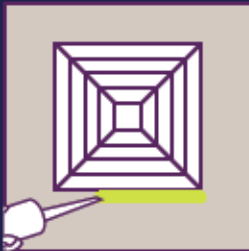
Areas of Usage:

- Joints between wooden or metal frames and concrete or brickwork.
- Joints between stairs and walls.
- Joints between concrete and sealing elements.
- Joints between walls and window sills.

Substrates: Wood, metal, masonry, glass, sanitary , glazed surfaces and unplasticized plastics (polyester).



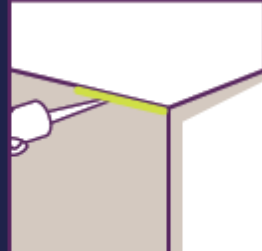
**DOORS & WINDOW
FRAMES**



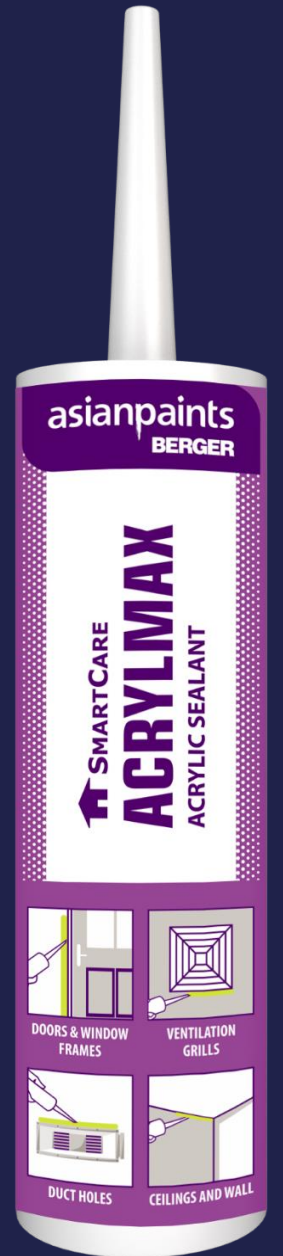
**VENTILATION
GRILLS**



DUCT HOLES



CEILINGS AND WALL

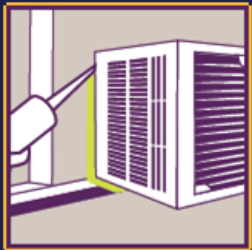


It is a high quality single component premium acetic cure silicone sealant which vulcanizes on exposure to moisture in the air at room temperature, to produce a flexible elastomeric sealant.

Areas of Usage:

- Non-structural glazing
- Structural attachment of many panel systems
- Sanitary applications
- Panel stiffener applications
- Aluminum, steel, painted metal, EIFS, granite, stone, concrete, brick & plastics.

Substrates: Wood, metal, masonry, glass, and sanitary.



METALS



MASONRY JOINTS



GLASS & WOOD



SANITARY JOINTS



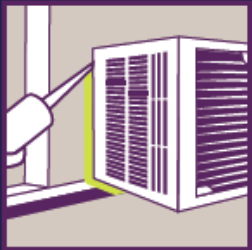
SMARTCARE
UNYVERSEAL ANTIFUNGAL
ALL PURPOSE ACETIC CURE SILICONE SEALANT

It is a single component acetic cure silicone sealant which vulcanizes on exposure to moisture in the air at room temperature, to produce a flexible elastomeric sealant.

Areas of Usage:

- Non-structural glazing
- Structural attachment of many panel systems
- Sanitary applications
- Panel stiffener applications
- Aluminum, steel, painted metal, EIFS, granite, stone, concrete, brick & plastics.

Substrates: Wood, metal, glass, sanitary joints & kitchen sinks.



METALS



KITCHEN SINK



GLASS & WOOD



SANITARY JOINTS



It is a moisture-curing, 1 component, polyurethane based, non-sag elastomeric sealant. It is highly resilient and has excellent recovery characteristics. It can function under a wide range of temperatures.

Areas of Usage:

- Used in sealing movement joints in precast concrete construction
- Balcony parapets
- Bridge culverts
- Retaining walls
- Caulking joints around windows, doors, skirting, walls & floor joints.

Substrates: Balcony parapets, caulking joints, concrete & gypsum board joints & skirting.



BALCONY PARAPETS



CAULKING JOINTS



**CONCRETE & GYPSUM
BOARD JOINTS**



SKIRTING



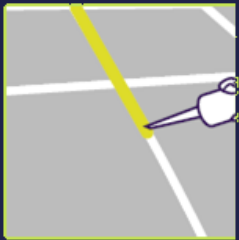
SMARTCARE
UNYVERSEAL POLYSULPHIDE
2K POLYSULPHIDE SEALANT

It is a two part Polysulphide sealant available in self-leveling (pouring grade) and gun grade consistencies. It effectively seals all joints subject to structural movement as well as non-moving joints against the ingress of water & dirt.

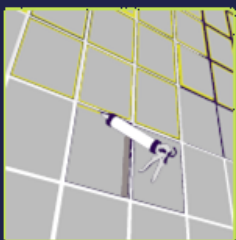
Areas of Usage:

- Sealing curtain wall panels
- Tilt up panels,
- Window glazing
- Flashing and metal setting,
- Contraction joints in sidewalks
- Shopping Centre or any traffic areas
- Portable water tanks and in sewage treatment plants

Substrates: Wood, metal, glass, sanitary joints & kitchen sinks.



CONTRACTON
JOINTS
IN SIDEWALKS



SEALING CURTAIN
WALL PANELS



WINDOW
GLAZING



SWIMMING POOL
DECK





SmartCare Bituprotek membrane is a plastomeric waterproofing membrane, manufactured from a rich mixture of bitumen & selected polymers (Styrene Butadiene Styrene) blended together to obtain excellent heat, UV resistance & waterproofing properties. The polymerized bitumen is coated on to a dimensionally stable reinforcement core of non woven spun bond polyester rot-proof fabric.

Areas of Application

- Concrete Foundations & Footings
- Inverted Roofs & Parapets
- Terraces, Balconies & Patios
- Sunken Slabs
- Basements, Pileheads, Bridges & Tunnels
- Airport Aprons & Ramp Areas
- Swimming Pools & Water Retaining Structures

Method of Application



Surface Preparation



Torching



Priming



Sealing



Alignment



High puncture and fatigue resistance.



Excellent resistance to positive water and vapor pressure.



Good heat resistance.



Can accommodate structural movements because of excellent flexibility.



Resistant to water borne chemicals.



High tensile and tear strengths.

SMARTCARE WATERPLAST

POLYMER MODIFIED BITUMEN BASED WATERPROOFING MEMBRANE

SmartCare Waterplast membrane is a polymeric waterproofing membrane, manufactured from a rich mixture of bitumen & selected polymers blended together to obtain excellent heat & waterproofing properties. The polymerized bitumen is coated on to a dimensionally stable reinforcement core of 120gsm/140gsm polyester fabric.

Areas of Application

- Damp Proof Membrane
- Inverted Roofs & Parapets
- Terraces, Balconies & Patios
- Sunken Slabs

Method of Application



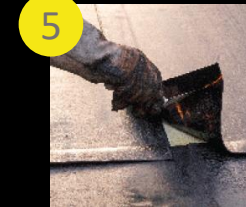
1 Surface Preparation



4 Torching



2 Priming



5 Sealing



3 Alignment



High puncture and fatigue resistance.



Excellent resistance to positive water and vapor pressure.



Good heat resistance.



Can accommodate structural movements because of excellent flexibility.



Resistant to water borne chemicals.



High tensile and tear strengths.



SmartCare Bitushield APP membrane is a plastomeric waterproofing membrane, manufactured from a rich mixture of bitumen & selected polymers (Atactic Poly Propylene) blended together to obtain excellent heat, UV resistance & waterproofing properties.

Areas of Application

- Concrete Foundations & Footings
- Inverted Roofs & Parapets
- Terraces, Balconies & Patios
- Sunken Slabs
- Basements, Pileheads, Bridges & Tunnels
- Airport Aprons & Ramp Areas
- Swimming Pools & Water Retaining Structures (externally)

-  High puncture and fatigue resistance.
-  Good heat resistance.
-  Resistant to water borne chemicals.
-  Excellent resistance to positive water and vapor pressure.
-  Can accommodate structural movements because of excellent flexibility.
-  High tensile and tear strengths.

Method of Application



Surface Preparation



Torching



Priming



Sealing



Alignment

SMARTCARE TILE ADHESIVE GP

SmartCare Tile Adhesive GP is a cementitious general purpose tile adhesive. It is a cement-based mortar for fixing ceramic tiles and stones for interior applications.

Propositions



OPTIMAL
SETTING TIME



QUICK
CURING



EXCELLENT
BONDING



RESISTANT TO
HUMIDITY



SMARTCARE TILE ADHESIVE HD

HEAVY DUTY TILE ADHESIVE

SmartCare Tile Adhesive HD is a high strength with high polymer content, shrinkage compensated hydraulic binder, premixed mortar for specific installation of tiles, porcelain tiles, marble, agglomerate, non-absorption tiles, granite, slate & natural stones.

Propositions



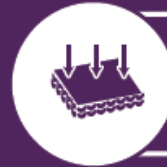
OPTIMAL
SETTING TIME



QUICK
CURING



HEAVY DUTY
USAGE



EXCELLENT
ADHESION



SMARTCARE

TILE GROUT LM

CEMENT BASED

SmartCare Tile Grout LM is a polymer latex modified water-resistant grout which has water repellence, excellent adhesion, high bonding strength, workability and permanent joint, which is non-shrinking and non-toxic. It is used for grouting of cement tiles, marbles, natural stones edges and has been specially formulated for wet or submerged grouting applications such as swimming pools, bathrooms, toilets, fountains and kitchens.

Areas of Application

- House Floors
- Commercial Floors
- Tiled Walls

Propositions



EASY TO APPLY

This cement based joint filler is easy to mix and apply.



WATER RESISTANCE

It's a water repelling impermeable joint filler suited for domestic and commercial floors, walls etc.



EASY TO CLEAN

Its non-dusting properties make cleaning simple.



Floor Coatings

Complete Floor Coating Solutions



STRONG



DURABLE



RELIABLE

GET THE
PERFECT
PROTECTION
WITH
**ASIAN PAINTS
BERGER
FLOOR
COATINGS**

Asian Paints Berger Floor Coating Range

Primers

Floor Guard Epoxy Primer

Apcoflor FP 100

Apcoflor FP 110

Apcoflor HFP 120

Apcoflor MFP 140



Asian Paints Berger
Floor Coatings

Top Coats

Floor Guard Epoxy

Apcoflor TC 500

Apcoflor TC 600

Apcoflor TC 510

Apcoflor SL1

Apcoflor SL 2

Apcoflor SL 4

Apcoflor HSC 3 (Screed)

Solutions For Car Park Floors Indoor

Apcoflor TC 510

Product Description

- Durable, wear resistant top coat.
- Impervious, flexible film.
- Excellent flow and leveling giving self leveled finish.
- Wide spectrum chemical resistance.
- Attractive, easy to clean and maintain.
- Odourless and safe to apply.

Physical Data:

Volume Solids : **100%**

(Based on ASTM D2697)

Typical Dry Film Thickness : **200 – 300 microns**

Wet Film Thickness : **200 – 300 microns**

Theoretical Coverage : **2.60 m²/kg @ 250 microns DFT**

Colour : **As per Shade card**

Finish : **Glossy**



Typical paint system

Apcoflor HFP 120
Apcoflor TC 510

1X 50 μ
2X 200 μ

TOTAL 450 μ



Above systems can be used with aggregates. The aggregates need to be broadcasted/sprinkled on the first epoxy coat in wet condition

Solutions For Car Park Floors Outdoor

Apcoflor TC 600

Product Description

A two pack acrylic polyol and aliphatic isocyanate based polyurethane floor topcoat. The topcoat is:

- Resistant to exterior environment condition with good mechanical properties.
- Excellent gloss and colour retention.
- Good water, chemical and abrasion resistance.

Physical Data:

Volume Solids : **45% + 2%**

(Based on ASTM D2697)

Typical Dry Film Thickness : **40 microns**

Wet Film Thickness : **90 microns**

Theoretical Coverage : **11.00 m²/litre @ 40 microns DFT**

Colour : **Limited colours**

Finish : **Gloss**



Typical paint system

Apcoflor HFP 120

1X 50 μ

Apcoflor TC 510

1X 300 μ

Apcoflor TC 600

2X 50 μ

TOTAL 450 μ



Above systems can be used with aggregates. The aggregates need to be broadcasted/sprinkled on the first epoxy coat in wet condition



Premium Floor Coating Solutions

PU Based Solutions

Two pack acrylic polyol and aliphatic iso cyanate based Polyurethane floor topcoat.

Designed Use

- Easy clean floor coating for food processing plants, soft drink plants

SYSTEM DETAILS:

- APCOLFOR HFP 120 / HP 100 Primer
- AGGREGATES AS NEEDED
- APCOFLOL TC 510
- APCOFLOL TC 600

Certifications:

- Impact Resistance: No sign of crack or disbonding observed, Test method - ASTM ISO 6272
- Crack Bridging Capacity: Value -1.20 mm, Test method - ASTM C 836:95
- Rapid Chloride Permeability: 93% reduction, Test method - ASTM C 1202.97
- Water Permeability: Nil, Test method - BS EN 12390 (PART 8 : 2000)
- Chemical Resistance: No change observed, Test method - ASTM D 543
- Hot Water Resistance: No change observed, Test method- ASTM D 570

Premium Floor Coating Solutions

Epoxy Based Solutions

Two component high build & solvent free, epoxy floor coating.

VOC: 3.9 gms/ltr

Designed Use

- Seamless automotive plants, warehouses and chemical plants.

SYSTEM DETAILS:

- APCOLFOR HFP 120 / HP 100 Primer
- AGGREGATES AS NEEDED
- APCOFOR TC 510

Certifications:

- **Crack Bridging Capacity:** Value -1.10 mm, Test method - ASTM C 836:95
- **Rapid Chloride Permeability:** 96% reduction, Test method - ASTM C 1202:97
- **Water Permeability:** Nil, Test method - BS EN 12390 (PART 8 : 2000)
- **Chemical Resistance:** No change observed, Test method - ASTM D 543
- **Hot Water Resistance:** No change observed, Test method- ASTM D 570
- **Anti-fungal test:** No growth seen, Test method - D3273
- **Anti-bacterial activity:** Zero no. of colonies, Test method - ASTM D558





Premium Floor Coating Solutions

Self Leveling Coatings

- Three component monolithic epoxy flooring.
- For various thicknesses, e.g.
 - SL2 - Upto 2mm
 - SL4 - Upto 4mm

Designed Use

Seamless floorings for showrooms, business centres, malls

Certifications:

- **Shore 'D' Hardness:** Value D/55/1, Test Method - ASTM D 2240
- **Compressive Strength:** 20.8 N/mm², Test Method - ASTM C 579
- **Flexural Strength:** Value 8.3 N/mm², Test Method - ASTM C 580
- **Tensile Strength:** 5.5 N/mm², Test method - ASTM C 307
- **Impact Resistance:** No sign of Crack or Disbonding observed, Test Method - ASTM ISO 6272
- **Crack Bridging Capacity:** Value -1.35 mm, Test Method - ASTM C 836:95



Asian Paints Berger
Royal Prince Trading Co,
Shop No: 5, Abraj Center, Baniyas Square,
Deira, Dubai, UAE
M: +971 56 522 5348, T: +971 4 225 7832



Email: asianpaints@royalprince.ae